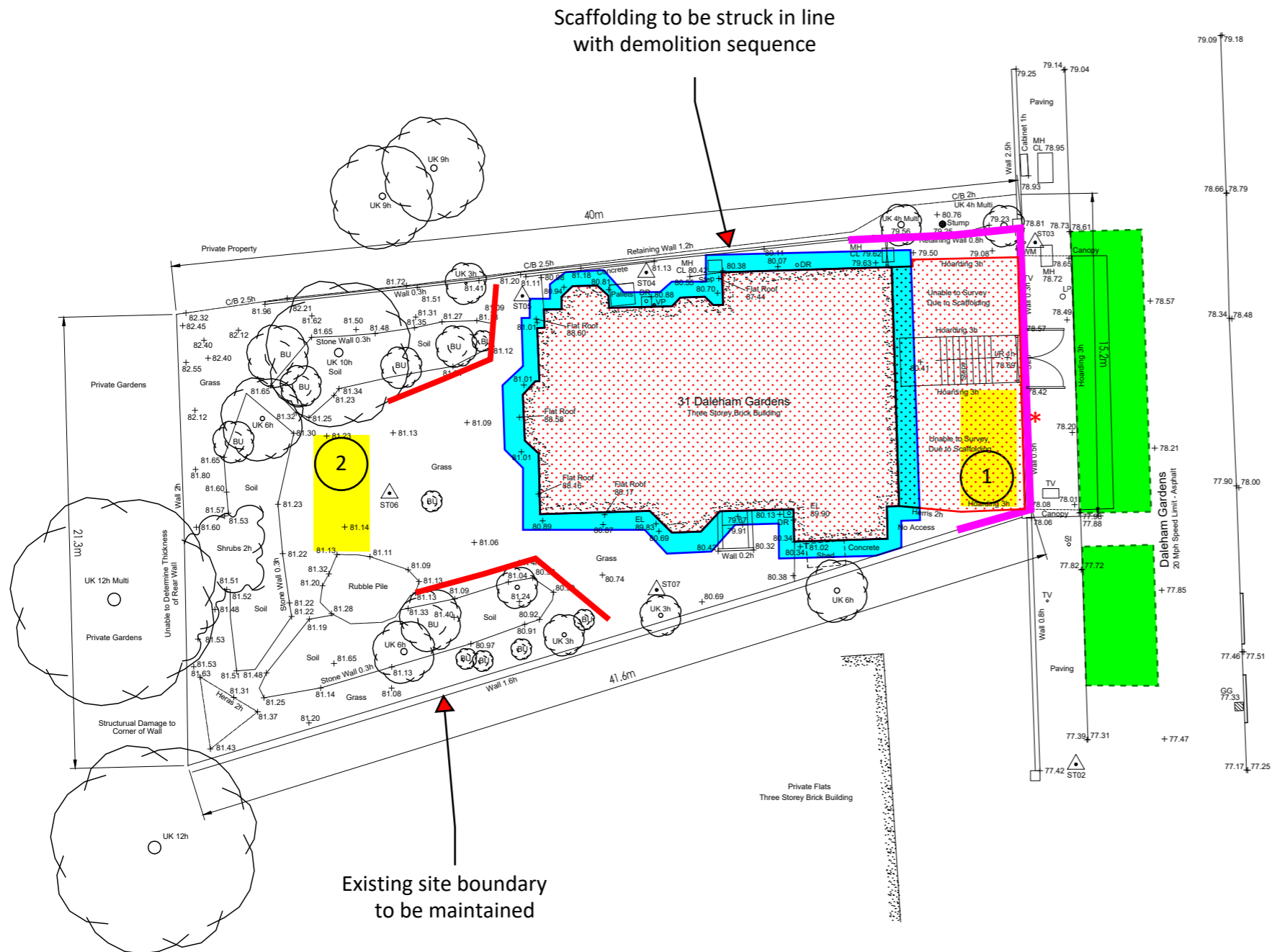













APPENDIX B

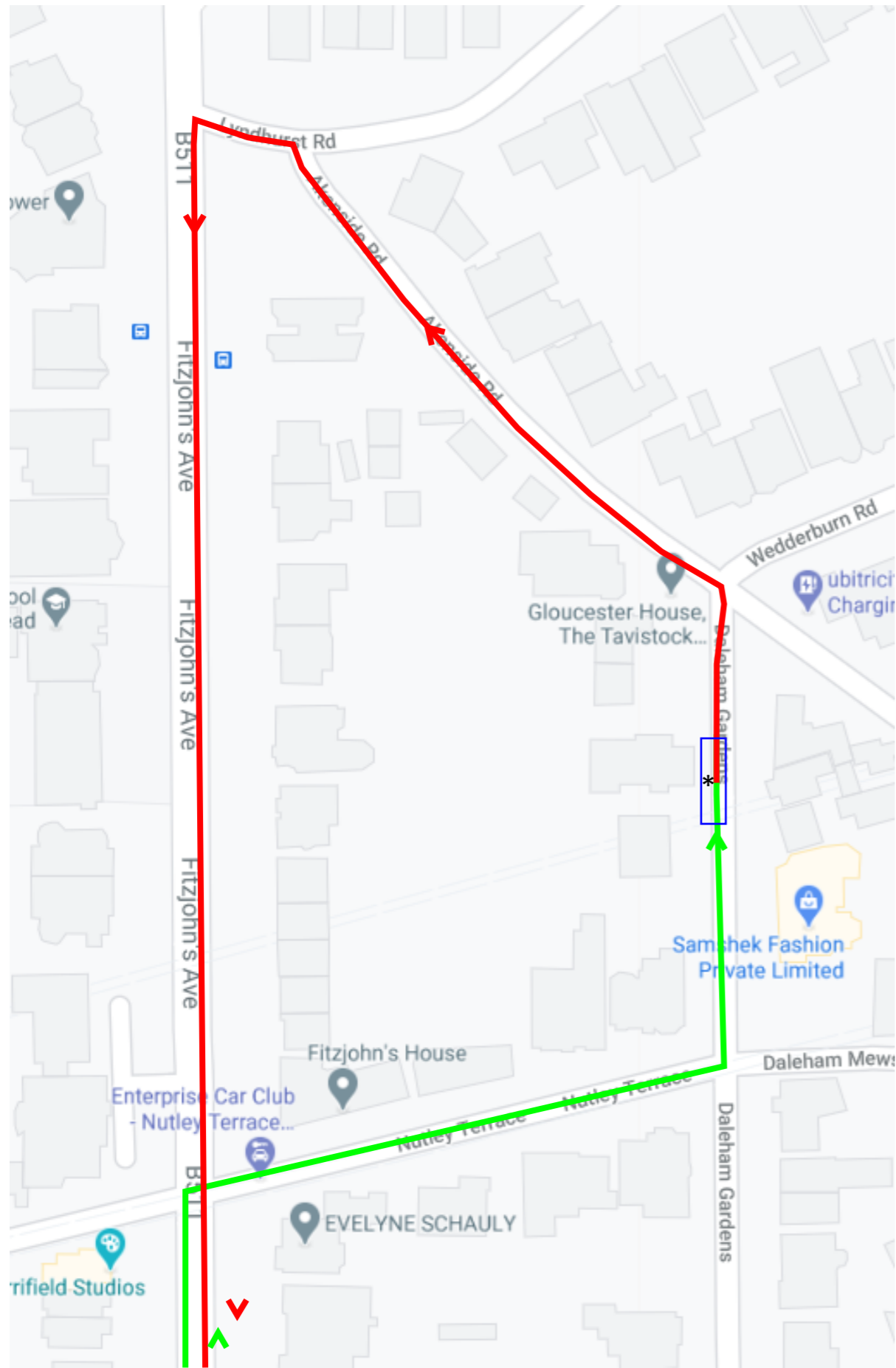
Logistics Strategy

31 - DALEHAM GARDENS LOGISTICS STRATEGY



Key:

-  New hoarding line (existing hoarding & gantry to be removed)
-  Full perimeter encapsulating scaffold with monarflex
-  Structure to be demolished
-  Site access gate
-  Site Welfare location (option 1)
-  Site Welfare Location (option 2)
-  Tree protection
-  Suspended parking bays (4 number)
-  Site Signage & Contractor details to front of Hoarding



To A41

TRAFFIC ROUTE

Key:

- Access route
- Exit route
- * Suspended bays
- Loading/unloading area

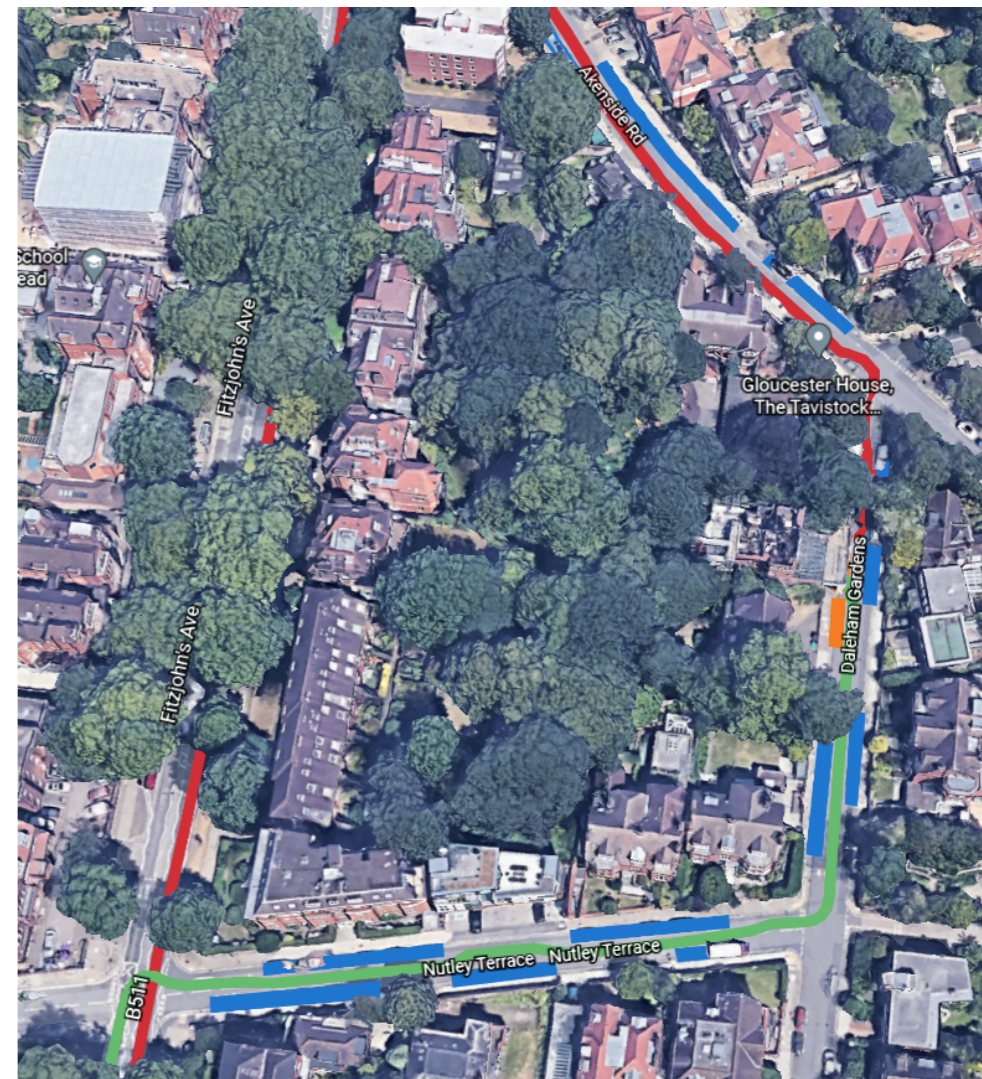
No parking on site

Lorry movements to be restricted during one-hour period before and after school opening/closing times

No cycle paths identified within proposed local highway routes

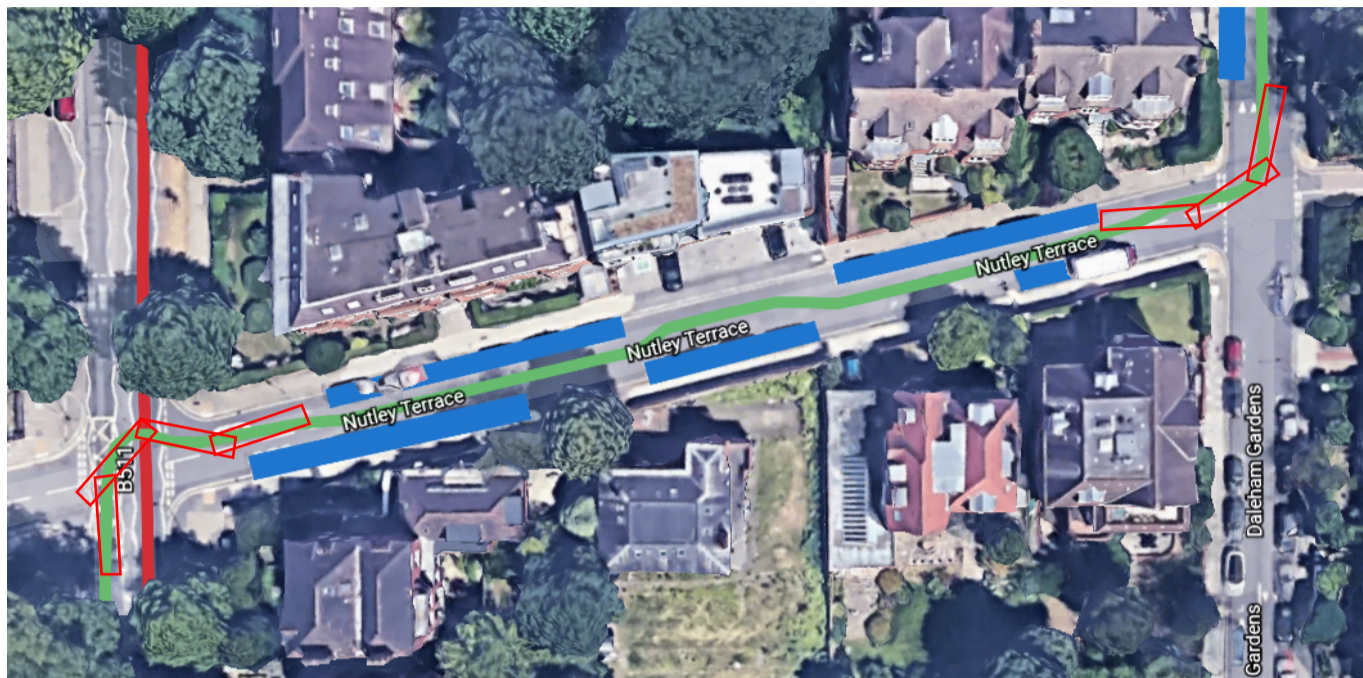
Foot-ways adjacent site to be managed by traffic marshals during deliveries and collections

4 suspended bays are proposed at the initial phases of works until front facade scaffold has been struck. This can then be reduced to 2 for the remainder of the demolition.



Paths proposed based on a 8-Wheeled tipper truck (maximum) no greater than 10.2m (l) x 2.5m (w)

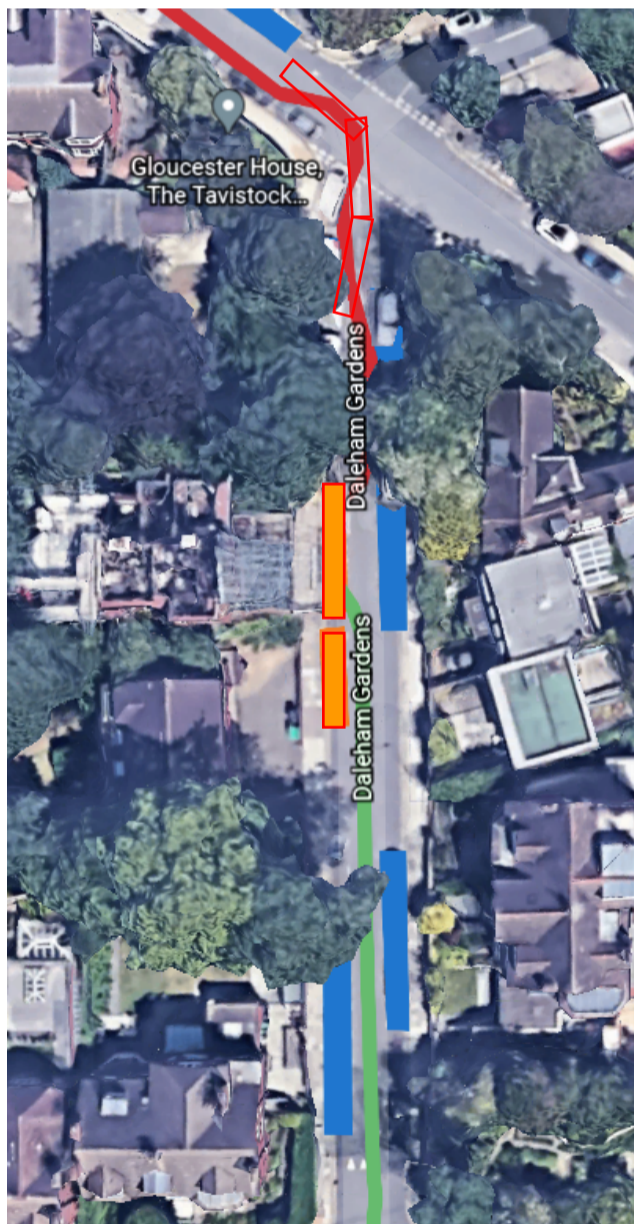
Nutley Terrace proposed vehicular route and path analysis



Access route only via Nutley Terrace

Blue areas outline local parking bays

Daleham Gardens proposed vehicular route and path analysis



Access route only via Nutley Terrace and exist to Akenside Route

Blue areas outline local parking bays

Proposed suspended parking bays for the work to facilitate deliveries and collections are outlined in orange.

Akenside Rd proposed vehicular route and path analysis

