

MAIDEN LANE ESTATE – INTRODUCTION OF FORMAL ON-STREET AND OFF-STREET PARKING CONTROLS

THE CAMDEN (HOUSING ESTATE ROADS AND CAR PARKS) (NO. 1) ORDER 2020

Notice is hereby given that the Council of the London Borough of Camden propose to make the above Order under sections 6, 35, 45, 46, 49 and 124 of and Part IV of Schedule 9 to the Road Traffic Regulation Act 1984, as amended. The general nature and effect of the Order would be, in:-

Allensbury Place, NW1

To introduce 'at any time' waiting restrictions throughout.

Broadfield Lane, NW1

To: (1) designate an on-street disabled residents' parking place with space for 7 vehicles on the north side outside Nos. 1-6/3-38 Broadfield Lane; (2) designate two residents' parking places, each with space for one vehicle, on the north side adjacent to No. 9b York Way, and on the south side adjacent to No. 71 Broadfield Lane; (3) designate a car club parking place with space for 2 vehicles on the south side adjacent to No. 71 Broadfield Lane; (4) designate an electric vehicle charging point parking place with space for 3 vehicles on the south side adjacent to No. 9c York Way; and (5) introduce 'At any time' waiting restrictions on all remaining kerbside.

Maiden Lane, NW1

To: (1) designate on-street disabled residents' parking places: with space for 2 vehicles on the east side adjacent to No. 180 Maiden Lane, and with space for 1 vehicle on the south side outside Nos. 123-151 Maiden Lane; (2) designate on-street residents' parking places with space for approx. 28 vehicles, distributed through the east and south sides; (3) designate on-street a free motorcycle parking place on the south side outside Nos. 123-151 Maiden Lane; and (4) introduce 'at any time' waiting restrictions on all remaining on-street kerbside; and

To provide and regulate off-street parking places, comprising residents' parking bays: (1) with space for 17 vehicles in the hard standing fronting Nos. 80-102 Maiden Lane; and (2) with space for 12 vehicles in the undercroft below Nos. 204-244 Maiden Lane.

St. Paul's Crescent, NW1

To: (1) designate an on-street disabled residents' parking place with space for 1 vehicle on the east side adjacent to No. 19 Rosebank Walk; (2) designate on-street residents' parking places with space for approx. 23 vehicles, distributed through the east and west sides; (3) designate an on-street free motorcycle parking place on the east side adjacent to No. 4 Rosebank Walk; and (4) introduce 'at any time' waiting restrictions on all remaining on-street kerbside; and

To provide and regulate an off-street parking place, comprising 7 residents' parking bays and 1 disabled residents' parking bay in the undercroft adjacent to No. 156 St. Paul's Crescent.

Land fronting Nos. 160-188 St. Paul's Crescent, NW1

To provide and regulate an off-street parking place, comprising 7 residents' parking bays.

Land fronting Nos. 172-202 St. Paul's Crescent and Beamish Gate, NW1

To provide and regulate an off-street parking place, comprising 12 residents' parking bays.

The Order would further provide for the issue of permits for use in and other terms and conditions of use for the above on-street parking places and off-street parking places and more generally in on-street and off-street areas in housing estates, and make provisions for waiting by vehicles in the above streets and more generally in housing estate roads.

Copies of the proposed Order, a plan depicting the proposals, and the Council's Statement of Reasons for proposing to make the Order may be obtained by contacting camden.consultations@projectcentre.co.uk or inspected at www.camden.gov.uk/recently-advertised-proposals or at the Council's offices at 5 Pancras Square, London N1C 4AG.

Any person wishing to object or make representations in respect of the proposed Order should send comments in writing, giving reasons for any objection by post to 'Camden Consultations, Project Centre, Unit 2 Holford Yard, London WC1X 9HD' or via e-mail to camden.consultations@projectcentre.co.uk, to be received by the end of 9 April 2020. For further information telephone 0203 092 0401.

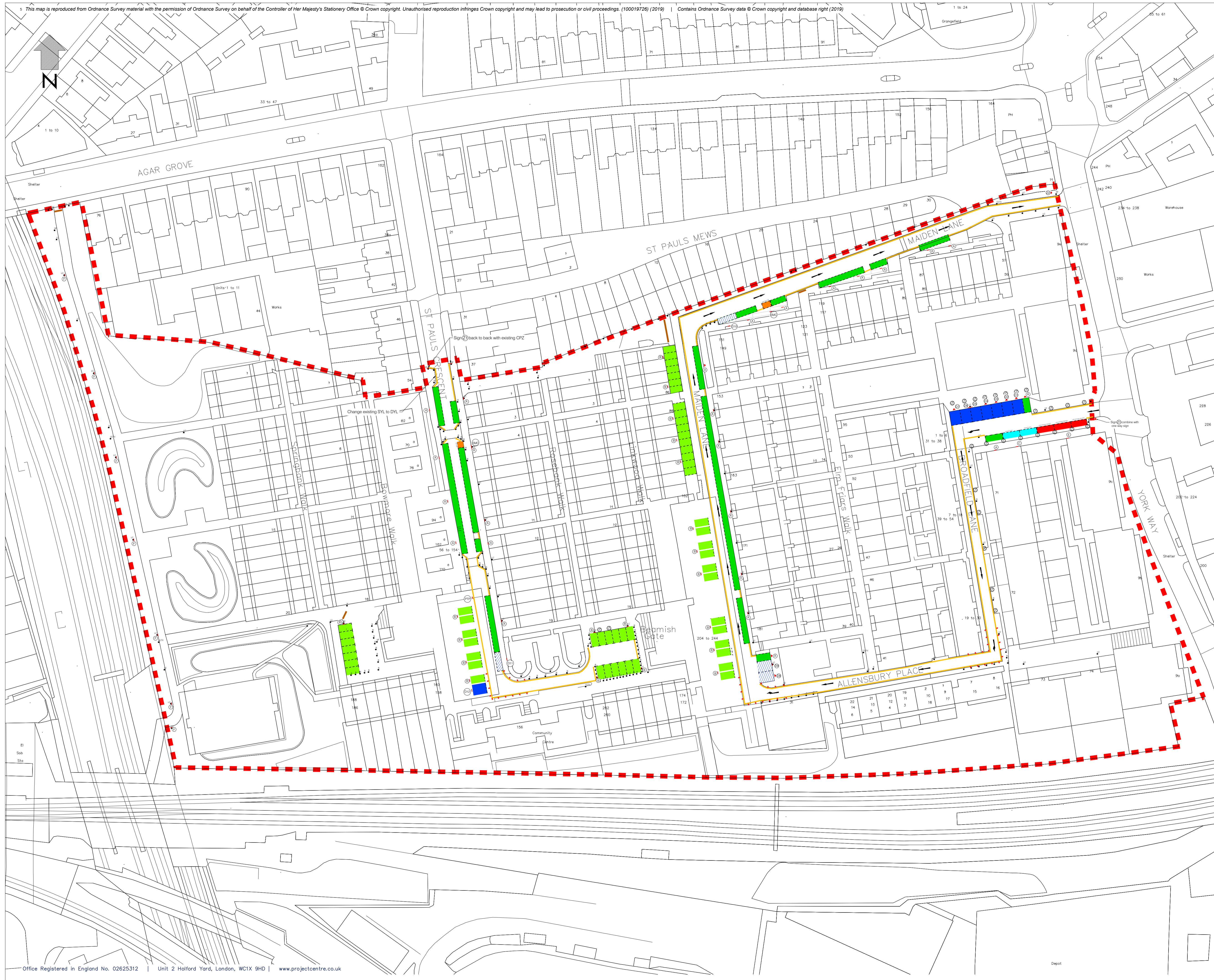
Peter Mardell
Head of Parking Operations
19 March 2020

THE CAMDEN (HOUSING ESTATE ROADS AND CAR PARKS) (NO. 1) ORDER 2020

STATEMENT OF REASONS

Maiden Lane Estate experiences ongoing problems with vehicles parked inconsiderately and dangerously without permission. These vehicles block parking bays, roads and paths on the estate, causing access problems for residents as well as council and emergency services. Legitimate permit holders find it increasingly difficult to find a space to park and drivers often block bays provided for the exclusive use of disabled residents. The proposals seek to resolve these issues by improving the parking layout on Maiden Lane and aligning parking control with the enforcement applied on its public highways. The Council investigated a number of options and undertook an informal consultation on the preferred scheme during December 2019. The decision report can be found at <http://democracy.camden.gov.uk/ieDecisionDetails.aspx?Id=2852>

19 March 2019



- ESTATE MAP LEGEND**
- LC Lamp column
 - SP Sign post
 - CCTV
 - B Bollard
 - Tree
 - Gate
 - Estate boundary
 - No waiting at any time
 - No loading at any time
 - █ Permit holders parking place (off-street)
 - █ Permit holders parking place (on-street)
 - █ Disabled parking place
 - █ Proposed disabled parking place
 - █ Car club parking place
 - █ Electric vehicle parking place
 - █ Motorcycle parking place
 - ▲ Sign on new post
 - LC Sign on lamp column
 - SP Sign on existing post
 - Sign on wall
 - ⓐ ⓑ Sign ref

DRAWING ISSUE DISCLAIMER
 THIS DRAWING HAS BEEN PRODUCED FOR INFORMATION AND OR DISCUSSION PURPOSES ONLY AND IS UNCONTROLLED. IT DOES NOT FORM ANY PART OF THE CONTRACTUAL DRAWING SET AND IS NOT FOR PUBLICATION.
UNCONTROLLED DOCUMENT



Unit 2 Holford Yard
 London WC1X 9HD
 Tel. 0330 0080 855
 Mail. info@projectcentre.co.uk
 Web. www.projectcentre.co.uk
 PS 77166

Client

Project
 MAIDEN LANE ESTATE PARKING

Drawing Title
 DETAILED DESIGN
 SIGNS AND LINES

Drawing Status
FOR CONSTRUCTION

Drawn	Designed	Date	Scale	Size
MS	TW	FEB 2020	NTS	A1

Drawing No. 100005771-2-SK01-DD-01 | Rev

**LONDON BOROUGH OF CAMDEN
TRAFFIC MANAGEMENT ORDER**

202* / No. **

The Camden (Housing Estate Roads and Car Parks) (No. 1) Order 202*

Made on ** ***** 202*

Coming into force on ** ***** 202*

ARRANGEMENT OF ARTICLES:

PART A - PRELIMINARY

1. Citation and commencement
2. Interpretation

**PART B – DESIGNATION AND USE OF FREE ON-STREET PARKING PLACES
AND WAITING AND LOADING RESTRICTIONS APPLICABLE TO STREETS**

3. Designation of free on-street parking places
 4. Vehicles for which free on-street parking places are designated
 5. Provisions relating to certain free on-street parking places
 6. Manner of standing in a free on-street parking place
 7. Restrictions on the use of free on-street parking places
 8. Placement of traffic signs and infrastructure in relation to free on-street parking places
 9. Power to suspend the use of free on-street parking places
 10. Exemptions to restrictions in relation to free on-street parking places
 11. Waiting and loading restrictions applicable to restricted streets
 12. Exemptions from and exceptions to waiting and loading restrictions
 13. Exemptions from waiting and loading restrictions in respect of disabled persons' vehicles
 14. Furniture removals and other exceptional loading or unloading
 15. Parking Permissions in relation to free on-street parking places and restricted streets
 16. Duty to move on
 17. Restrictions on methods of loading or unloading in restricted streets
 18. Restriction on street trading in relation to restricted streets
 19. Restriction of engine idling in a free on-street parking place or restricted street
 20. Contravention of Part B of this Order
-

PART C - DESIGNATION AND USE OF CHARGED-FOR ON-STREET PARKING PLACES

21. Designation of charged-for on-street parking places
22. Vehicles for which charged-for on-street parking places are designated
23. General provisions relating to permits
24. Provisions relating to Residents' Permits
25. Provisions relating to Disabled Residents' Permits
26. Provisions relating to Visitors' Permits
27. Provisions relating to Car Club Permits
28. Provisions relating to Contractor Permits
29. Manner of standing in a charged-for on-street parking place
30. Restrictions on the use of charged-for on-street parking places
31. Placement of traffic signs and infrastructure in relation to charged-for on-street parking places
32. Power to suspend the use of charged-for on-street parking places
33. Exemptions to restrictions in relation to charged-for on-street parking places
34. Parking Permissions in relation to charged-for on-street parking places
35. Restriction of engine idling in a charged-for on-street parking place
36. Contravention of Part C of this Order

PART D - USE OF OFF-STREET PARKING PLACES

37. Use of a parking bay in an off-street parking place
38. Provisions relating to permits for use in parking bays in an off-street parking place
39. Manner of standing in an off-street parking place
40. Other conditions of use of an off-street parking place
41. Placement of traffic signs and infrastructure in relation to off-street parking places
42. Power to suspend the use of an off-street parking place
43. Exemptions to restrictions in relation to off-street parking places
44. Parking Permissions in relation to off-street parking places
45. Restriction of engine idling in an off-street parking place
46. Contravention of Part D of this Order

SCHEDULES:

- Schedule 1 - Map tile list
- Schedule 2 – Permit eligible properties
- Schedule 3 – Parking and permit charges

The London Borough of Camden, after consulting the Commissioner of Police of the Metropolis, in exercise of the powers conferred by section 6 (in respect of the provisions of **Part B** of this Order in relation to the designation of free parking places and restriction of waiting on streets), sections 45, 46 and 49 (in respect of the provisions of **Part C** of this Order in relation to the designation of charged-for parking places on streets), section 35 (in respect of the provisions of **Part D** of this Order in relation to the regulation of parking in off-street parking places), and section 124 of and Part IV of Schedule 9 to the Road Traffic Regulation Act 1984 (1984 c.27), and of all other powers thereunto enabling, hereby make the following Order:

PART A - PRELIMINARY

1. CITATION AND COMMENCEMENT

- 1.1. This Order may be cited as the Camden (Housing Estate Roads and Car Parks) (No. 1) Order 202* and shall come into force for all purposes on **
***** 202*.

2. INTERPRETATION

- 2.1. In this Order, except where the context otherwise requires the following expressions have the meanings hereby respectively assigned to them:
- “**1984 Act**” means the Road Traffic Regulation Act 1984;
- “**2016 Regulations**” means the Traffic Signs Regulations and General Directions 2016 (SI 2016/362);
- “**ambulance**” means a vehicle that is adapted for, and used for no other purpose than, the carriage of sick, injured or disabled persons to or from welfare centres or places where medical or dental treatment is given and which is readily identifiable as a vehicle used for the carriage of such persons by virtue of being marked ‘Ambulance’ on both sides;
- “**authorised agent**” means the parking services contractor appointed by and acting on behalf of the Council for the purposes of the supervision and enforcement of the provisions of this order;
- “**car club**” means an organisation operating a car sharing scheme approved by the Council to operate within its boundaries which supports the planning and sustainable transport policy objectives of the Council;
- “**car club vehicle**” means a vehicle operated by a car club which is provided for the use of persons who have paid the relevant membership fee and any other related charges by means of a real-time or advance booking system, so as to have access to the vehicle for a specified period or periods;

“charged-for on-street parking place” means an area on a street designated as a charged-for on-street parking place under the provisions of **Part C** of this Order being either: a residents’ parking place, or a disabled residents’ parking place, or a multi-permit parking place, or a car club parking place, in each case being identified as such type on the map tile relating to that parking place, by reference to the map schedule legend or the tile label, or both;

"civil enforcement officer" means a person authorised by the Council or its authorised agent to supervise any parking place;

“contractor” means a contractor authorised by the Council to undertake maintenance or works on the behalf of the Council at housing estate properties;

“controlled hours” in relation to an on-street parking place or an off-street parking place or a parking bay within an off-street parking place means the period expressed in either the map schedule legend or a tile label relating to that on-street parking place, or off-street parking place, or parking bay within an off-street parking place, as the case may be;

“controlled parking period” means a continuous period of time during a single calendar day that constitutes part of the controlled hours;

"council" means the Council of the London Borough of Camden and includes any duly authorised officer of the council;

"disabled person's badge" and **“relevant position”** have the same meanings ascribed to them by the Local Authorities’ Traffic Orders (Exemptions for Disabled Persons) (England) Regulations 2000 (SI 2000/683);

"driver", in relation to a vehicle waiting in a parking place, means the person in control of the vehicle at the time it was left in a parking place;

"electric vehicle" means a vehicle in which the electrical motive power is derived from any electrical storage battery which is not connected to any source of power when the vehicle is in motion;

“electronic communications apparatus” and **“electronic communications network”** have the same meanings as in the Communications Act 2003 (2003 c. 21);

“electronic permits system” means a computerised system operated by the Council or its authorised agent which facilitates and records details pertaining to parking permits and which can transmit data to and receive data from hand-held devices;

"enactment" means any enactment, whether public general or local, and includes any order, bylaw, rule, regulation, scheme or other instrument having effect by virtue of an enactment;

“free on-street parking place” means an area on a street designated as a free on-street parking place under the provisions of **Part B** of this Order being either: a disabled persons blue badge parking place, or an electric vehicle charging point parking place, or a motorcycle parking place, or a parking place reserved for loading and unloading, in each case being identified as such type on the map tile relating to that parking place, by reference to the map schedule legend or the tile label, or both;

“goods” means goods of any kind, whether animate or inanimate, and includes postal packets of any description; and "delivering" and "collecting" in relation to any goods includes checking the goods for the purpose of their delivery or collection;

“goods vehicle” means a motor vehicle which is constructed or adapted for use for the carriage of goods or burdens of any description and which is not drawing a trailer;

“hand-held device”, for the purpose of this Order, means an electronic computer terminal which can transmit data to and receive data from the electronic permits system for the purposes of verifying if valid permits have been granted or issued in respect of vehicles waiting in any parking place specified in the map-based schedule;

“map schedule legend” means the map schedule legend attached to this Order which, when used in conjunction with a map tile, identifies the specific type of parking places designated by this Order and the waiting and loading, restrictions imposed by this Order and the specific type of parking bays within off-street parking places to which the provisions of this Order apply, and, where appropriate, certain of their governing provisions;

“map tile” means an individual map with a specific tile reference, being part of the map based schedule attached to this Order;

“map based schedule” means a collection of map tiles attached to this Order and listed in **Schedule 1** which depict the parking places designated by this Order and the waiting and loading restrictions imposed by this Order and, in conjunction with the map schedule legend or the tile label, or both, identifies the type of each particular parking place, or waiting restriction and loading restriction, or parking bay within an off-street parking place, as the case may be, and, if appropriate, certain of its governing provisions:

Provided that the Council does not accept responsibility for any inaccuracies contained in the Ordnance Survey data relied upon to create the map based schedule and where a parking place is depicted on the map based schedule, that parking place will continue to apply irrespective of any subsequent changes that have been made to the underlying Ordnance Survey data;

“motorcycle” means a mechanically propelled vehicle with fewer than four wheels the unladen weight of which does not exceed 410 kilograms;

“online” in relation to the renewal of permits means the use of the internet for this purpose;

“parking bay” means an area within an off-street parking place which is provided for the leaving of one vehicle only at a time, being either a Residents’ parking bay, or a Disabled Residents’ parking bay, or a Multi-Permit parking bay, or a car club parking bay, or an electric vehicle charging point parking bay, or a disabled persons’ blue badge parking bay, or a parking bay reserved for loading and unloading, in each case being identified as such type on the map tile relating to that parking bay, by reference to the map schedule legend or the tile label, or both;

“parking place” means either an area on a street designated as a parking place under the provisions of **Part B** or **Part C** of this Order, or an area of land provided as an off-street parking place, to which the provisions of **Part D** of this Order apply;

“off-street parking place” means an area of land not being a street which has been provided for use by the Council as an off-street parking place under the powers conferred by section 32 of the 1984 Act, and to the conditions of use of which the provisions of **Part D** of this Order apply;

"on-street parking place" means an area on a street either: designated as a free on-street parking place under the provisions of **Part B** of this Order, or designated as a charged-for on-street parking place under the provisions of **Part C** of this Order;

“passenger vehicle” means a motor vehicle other than a motorcycle constructed solely for the carriage of passengers and their effects and not designed to carry more than eight passengers exclusive of the driver, and not drawing a trailer;

“permit identifier” has the same meaning as in Schedule 1 to the 2016 Regulations;

“postal packets” has the same meaning as in section 65 of the Postal Services Act 2011 (2011 c. 5);

"prescribed hours" means, in relation to a restricted street, being the hours during which a vehicle may not wait whilst complying with the relevant provisions of this Order, means the time indicated by means of the map schedule legend or the tile label, or both, in relation to that restricted street.

"restricted hours" means, in relation to a restricted street, being the hours during which a vehicle may not wait for the purpose of loading or unloading that vehicle whilst complying with the relevant provisions of this Order, means the time indicated by means of the map schedule legend or the tile label, or both, in relation to that restricted street;

"restricted street", means any street or part of a street within a housing estate in the London Borough of Camden identified by way of the map schedule legend or the tile label, or both, as having prescribed hours or restricted hours applying to that street or length of street;

Provided that the expression “restricted street” shall not include any area on a street which is shown on a map tile designated as an on-street parking place under the provisions of either **Part B** or **Part C** of this Order, during the controlled hours relating to that on-street parking place.

“resident” means a person aged seventeen years or over whose usual place of abode is at premises or at any addresses listed in **Schedule 2**;

"street" means all or any part of a street, and includes any road or highway within a housing estate which is open to the general public and shown in the map-based schedule, whether or not a highway maintainable at the public expense as defined in section 329(1) of the Highways Act 1980 (1980 c.66);

"tile label", where shown on a map tile in relation to a parking place, means a label which indicates the type of parking place and if appropriate, other applying conditions;

"traffic sign" has the same meaning as in section 64 of the 1984 Act; and

“vehicle band”, for the purposes of this Order, is the same band a vehicle is allocated for the purposes of payment of Vehicle Excise Duty.

- 2.2. Any reference in this Order to:
 - 2.2.1. any enactment shall be construed as a reference to that enactment as amended, applied, consolidated, re-enacted by or as having effect by virtue of any subsequent enactment;
 - 2.2.2. a numbered Article shall, unless the context otherwise requires, be construed as a reference to the Article bearing that number in this Order and, unless otherwise specified, shall be construed as referring to each sub-article or paragraph or sub-paragraph within the Article;
 - 2.2.3. a numbered Schedule shall, unless the context otherwise requires, be construed as a reference to the Schedule bearing that number in this Order.
- 2.3. The Interpretation Act 1978 (1978 c. 30) shall apply for the interpretation of this Order as it applies for the interpretation of an Act of Parliament.
- 2.4. The restrictions, prohibitions and requirements imposed by this Order are in addition to and not in derogation of any restriction, prohibition or requirement imposed by any other enactment and any exception or exemption from the provisions of this Order are without prejudice to the provisions of any other enactment.
- 2.5. For the purposes of this Order a vehicle shall be deemed to be waiting in a restricted street, a free on-street parking place, a charged-for on-street parking place or an off-street parking place if the vehicle is stationary and any point of the restricted street, or free on-street parking place, or charged-for on-street parking place, or off-street parking place, as the case may be, is below the vehicle or its load.

PART B – DESIGNATION AND USE OF FREE ON-STREET PARKING PLACES AND WAITING AND LOADING RESTRICTIONS APPLICABLE TO STREETS

NOTE: The provisions of this Part of the Order are those derived from the powers conferred upon the Council under section 6 of the 1984 Act.

3. DESIGNATION OF FREE ON-STREET PARKING PLACES

- 3.1. Each area on a street identified on the map based schedule as a free on-street parking place or and, if appropriate, by way of a tile label or the map schedule legend, or both, as an area marked out and signed for the use therein of specified classes of vehicles following the conditions specified in this Order in relation to that free on-street parking place, is a designated free on-street parking place.
- 3.2. Unless otherwise so identified, a free on-street parking place shall be bounded on one side of its length by the edge of the carriageway and be an area marked out to a road marking and depicted by a regulatory sign, either in accordance with the 2016 Regulations, or if applicable, by virtue of any special authorisation given by the Department for Transport.

4. VEHICLES FOR WHICH FREE ON-STREET PARKING PLACES ARE DESIGNATED

- 4.1. Each free on-street parking place shall only be used, subject to the provisions of this Part of the Order, unless otherwise so specified, for the leaving during the controlled parking period of vehicles of the following class, that is: passenger vehicles, or goods vehicles that fit wholly within the limits of a free on-street parking place and the overall height of which does not exceed 2.3 metres, or motorcycles.

Provided that the Council reserves the right to withdraw the above provision in respect of a particular vehicle in respect of any free on-street parking place if that vehicle is considered by the Council to be unsuitable to be left in that location, regardless of compliance with the vehicle size criteria stated above.

- 4.2. Each free on-street parking place being a disabled persons blue badge parking place may be used, subject to the provisions of this Order, for the leaving during the controlled parking period of such vehicles of the class specified in **Article 4.1** as display in the relevant position a valid disabled persons badge.
- 4.3. Each free on-street parking place being an electric vehicle charging point parking place may be used, subject to the provisions of this Order and the maximum waiting and no return periods specified in **Article 5.2**, for the waiting during the controlled parking period of such electric vehicles as are connected via a recharging lead to the charging post installed in respect of that electric vehicle charging point parking place, subject to the maximum parking period and minimum return interval

- 4.4. Each free on-street parking place being a motorcycle parking place may be used, subject to the provisions of this Order, for the leaving during the controlled parking period of such vehicles as are motorcycles.
- 4.5. Each free on-street parking place being a parking place reserved for loading and unloading may be used, subject to the provisions of this Order and the maximum waiting and no return periods specified in **Article 5.1**, for waiting during the controlled parking period of such vehicles as are passenger vehicles, goods vehicles, or motorcycles.

5. PROVISIONS RELATING TO CERTAIN FREE ON-STREET PARKING PLACES

- 5.1. No person shall cause any vehicle to wait in a parking place reserved for loading and unloading during the controlled parking period for a continuous period of more than the time stated, in such circumstances as it is stated, on the map schedule legend or the tile label, or both, in respect of that parking place reserved for loading and unloading, and no vehicle may return to that a parking place reserved for loading and unloading shall return to that parking place reserved for loading and unloading during the controlled parking period until the expiration of a period of time stated, in such circumstances as it is stated, on the map schedule legend or the tile label, or both, in respect of that parking place reserved for loading and unloading.
- 5.2. No person shall cause any vehicle to wait in an electric vehicle charging point parking place during the controlled parking period for longer than three hours, provided that no vehicle may return to that electric vehicle charging point parking place during the controlled parking period within three hours.

6. MANNER OF STANDING IN A FREE ON-STREET PARKING PLACE

- 6.1. Every vehicle waiting in a free on-street parking place which is not in a one-way street shall stand so that every part of the vehicle is within the marked limits of a free on-street parking place and with its side parallel to the kerb unless the marked limits of the free on-street parking place indicate that the vehicle should stand otherwise.
- 6.2. In the case of a vehicle waiting in a free on-street parking place that is in a one-way street, the vehicle shall stand so that the near-side of the vehicle is adjacent to the left-hand edge of the carriageway or so that the off-side of the vehicle is adjacent to the right-hand edge of the carriageway unless the marked limits of the free on-street parking place indicate that the vehicle should stand otherwise.

7. RESTRICTIONS ON THE USE OF FREE ON-STREET PARKING PLACES

- 7.1. No person shall use any free on-street parking place or any vehicle whilst in a free on-street parking place in connection with the sale or offering for sale of any article to any person in or near the parking place or in connection with

the selling or offering for sale or hire of their skill in handicraft or their services in any other capacity.

- 7.2. The provisions of this Article shall not prevent the sale of goods from a vehicle if the vehicle is one which may be left in a free on-street parking place in accordance with the provisions of **Article 4** and the goods are immediately delivered at or taken into premises adjacent to the vehicle from which the sale is offered.

8. PLACEMENT OF TRAFFIC SIGNS AND INFRASTRUCTURE IN RELATION TO FREE ON-STREET PARKING PLACES

- 8.1. The Council shall:
- 8.1.1. cause the limits of each free on-street parking place to be indicated on the carriageway by placing and maintaining thereon appropriate traffic signs;
- 8.1.2. place and maintain in or in the vicinity of each free on-street parking place traffic signs approved by the Secretary of State for Transport indicating that such free on-street parking place may be used during the controlled parking period for the leaving of vehicles specified in **Article 4**;
- 8.1.3. install a charging post or posts in such position as they think fit in or in the vicinity of each electric vehicle charging point parking place; and
- 8.1.4. carry out such other work as may be reasonably required for the purposes of the satisfactory operation of a free on-street parking place.

9. POWER TO SUSPEND THE USE OF FREE ON-STREET PARKING PLACES

- 9.1. The Council or the Commissioner of Police of the Metropolis may suspend the use of a free on-street parking place or part of a free on-street parking place whenever that person considers it reasonably necessary to do so:
- 9.1.1. to facilitate the movement of traffic or to promote its safety;
- 9.1.2. to facilitate any building operation, demolition or excavation adjacent to the free on-street parking place;
- 9.1.3. for the maintenance, improvement or reconstruction of the road and street furniture, the cleansing of gullies or to maintain trees adjacent to the free on-street parking place;
- 9.1.4. to facilitate the laying, erection, alteration, removal or repair in or adjacent to the free on-street parking place of any sewer, mains or pipe for the supply of water, gas, electricity or of any electronic communications apparatus;
- 9.1.5. for the convenience of occupiers of premises adjacent to the free on-street parking place on any occasion of the removal of furniture to or from one office or dwelling-house adjacent to the free on-street parking place from or to a depository, another office or dwelling-house;
- 9.1.6. on any occasion on which it is likely by reason of some special attraction that any street will be thronged or obstructed or to facilitate filming work;

- 9.1.7. for the convenience of occupiers of premises adjacent to the free on-street parking place on the occasion of weddings, funerals, or other special occasions.
- 9.2. A police constable in uniform may suspend for not longer than twenty-four hours the use of a free on-street parking place or any part thereof whenever he or she considers such suspension reasonably necessary for the purpose of facilitating the movement of traffic or promoting its safety.
- 9.3. The suspension of a free on-street parking place or part of a free on-street parking place shall be indicated by the placement in or adjacent to the free on-street parking place of traffic signage of such type as may be prescribed or authorised under section 64 or 65 of the 1984 Act indicating that the waiting of vehicles is prohibited and the Council may temporarily remove or replace any permanent traffic signage in order to convey the same effect.
- 9.4. No person shall cause or permit a vehicle to wait in any part of a free on-street parking place during such period as there is in or adjacent to that free on-street parking place a traffic sign placed in pursuance of **Article 9.3**.
- 9.5. Nothing in this Article shall apply in respect of any vehicle which is waiting for any reason specified in **Articles 10.1.2, 10.1.4, or 10.1.5**, or with the permission of the person suspending the use of all or part of the free on-street parking place or a police constable in uniform or any person duly authorised by the Council.

10. EXEMPTIONS TO RESTRICTIONS IN RELATION TO FREE ON-STREET PARKING PLACES

- 10.1. Notwithstanding the foregoing provisions of this Order any vehicle may wait during the controlled parking period in any part of a free on-street parking place if the use of that part has not been suspended and if:
 - 10.1.1. the vehicle is waiting only for so long as is necessary to enable a person to board or alight from the vehicle;
 - 10.1.2. the vehicle is waiting due to circumstances beyond the reasonable control of the driver, in order to avoid an accident or on the instruction of a police officer in uniform or civil enforcement officer;
 - 10.1.3. the vehicle is an ambulance or is being used for fire brigade or police purposes or is in the service of the Council and is being used in pursuance of statutory powers or duties;
 - 10.1.4. the vehicle is waiting only for as long as may be necessary to enable it to be used in connection with the removal of any obstruction to traffic;
 - 10.1.5. the vehicle not being a passenger vehicle is waiting while postal packets addressed to premises adjacent to the free on-street parking place in which the vehicle is waiting are being unloaded from the vehicle or, having been unloaded, are being delivered or while postal packets are being collected for loading onto the vehicle from premises or posting boxes adjacent to the free on-street parking place in which the vehicle is waiting or, having been so collected, are being loaded thereon;

- 10.1.6. the vehicle not being a passenger vehicle is waiting only for so long as may be reasonably necessary to enable it to be used for any purposes specified in **Articles 9.1.2, 9.1.3, or 9.1.4;**
- 10.1.7. in any other case the vehicle is waiting for the purpose of delivering or collecting goods or loading or unloading goods from the vehicle at premises adjacent to the free on-street parking place in which the vehicle is waiting and the vehicle does not wait for such purposes for more than twenty minutes or such longer period as a police constable in uniform or civil enforcement officer may approve.

11. WAITING AND LOADING RESTRICTIONS APPLICABLE TO RESTRICTED STREETS

- 11.1. Subject to the remaining provisions of this Article, no person shall cause or permit any vehicle to wait during the prescribed hours in any restricted street except for so long as may be necessary for the purposes of loading or unloading goods to or from the vehicle in the course of collecting from or delivering to premises adjacent to the restricted street.
- 11.2. No person shall cause or permit any vehicle to wait for the purpose of loading or unloading goods to or from the vehicle in any restricted street during any restricted hours relating to the restricted street.
- 11.3. No person shall cause or permit any vehicle with a maximum laden weight exceeding 3.5 tonnes to wait during the prescribed hours in any restricted street for the purposes expressed in **Article 11.1** for a period of more than 40 minutes if those prescribed hours fall between the hours of 11am and 6.30pm.
- 11.4. No person shall cause or permit any vehicle with a maximum laden weight of 3.5 tonnes or less to wait during the prescribed hours in any restricted street for the purposes expressed in **Article 11.1** for a period of more than 20 minutes if those prescribed hours fall between the hours of 11am and 6.30pm.

12. EXEMPTIONS FROM AND EXCEPTIONS TO WAITING AND LOADING RESTRICTIONS

- 12.1. The restrictions specified in **Article 11** shall not apply to:
 - 12.1.1. A vehicle when used for fire brigade, ambulance, or police purposes; or
 - 12.1.2. A vehicle when used in the service of a local authority in pursuance of statutory powers or duties provided that in all the circumstances it is reasonably necessary in the exercise of such powers or the performance of such duties for the vehicle to wait in the place in which it is waiting.
- 12.2. Nothing in **Article 11** shall render it unlawful to cause or permit a vehicle to wait in any restricted street in the following circumstances:
 - 12.2.1. While waiting for so long as may be necessary for the purpose of enabling any person to board or alight from the vehicle or to load thereon or unload therefrom their personal luggage;

- 12.2.2. While postal packets are being delivered to or collected from premises or posting boxes in or adjacent to any such street in which the vehicle is waiting;
- 12.2.3. While the vehicle is being used in connection with any building operation, demolition or excavation in or adjacent to any such street, the removal of any such obstruction to traffic in any street, the maintenance, improvement, reconstruction, cleansing or lighting of any street, the laying, erection, alteration or repair in or adjacent to any street of any sewer or of any main, pipe or apparatus for the supply of gas, water electricity or any electronic communications network, or the placing, maintenance or removal of any traffic sign, if the vehicle cannot conveniently and lawfully be used for that purpose in any street not being a restricted street or outside the prescribed hours;
- 12.2.4. Where the vehicle is a taxi or private hire vehicle, licensed by the Public Carriage Office, and the vehicle is waiting between the hours of 10 pm and 6 am only for so long as may be necessary to enable a passenger to obtain cash from an automated telling machine in the vicinity for the purposes of paying their fare;
- 12.2.5. While any gate or other barrier at the entrance to premises to which the vehicle requires access to or from which it has emerged is being opened or closed, if it is not reasonably practicable for the vehicle to wait in any other place while such gate or barrier is being opened or closed;
- 12.2.6. Where the person in control of the vehicle is required by law to stop, wait, remain at rest or is obliged to do so in order to avoid an accident;
- 12.2.7. Anything done with the permission or at the direction of a police constable in uniform or civil enforcement officer.

13. EXEMPTIONS FROM WAITING AND LOADING RESTRICTIONS IN RESPECT OF DISABLED PERSONS' VEHICLES

- 13.1. The restrictions specified in **Article 11.1** shall not apply in relation to a vehicle on which is displayed a disabled person's badge in the relevant position provided that, where the prescribed hours are of a period of more than three hours duration, that vehicle may wait for a period of no more than three hours being a period not separated by an interval of less than one hour from the previous period of waiting by the same vehicle in the same street on the same day.

14. FURNITURE REMOVALS AND OTHER EXCEPTIONAL LOADING OR UNLOADING

- 14.1. Subject to the provisions of **Article 14.2**, nothing in **Article 11** of this Order shall apply so as to restrict the loading or unloading of any vehicle while the vehicle is in actual use in any restricted street in connection with the removal of furniture to or from one office, dwelling house, or depository adjacent to that restricted street from or to another office, dwelling house or depository.

- 14.2. The provisions of **Article 14.1** shall not apply to any vehicle waiting in any restricted street during the restricted hours unless notice has been given twenty-four hours in advance to the police, Council or authorised agent, their consent obtained and such reasonable conditions as they may impose are complied with.
- 14.3. Without prejudice to the provisions of **Article 14.2**, nothing in **Article 11** of this Order shall apply so as to restrict the loading or unloading of any vehicle while the vehicle is in actual use in any restricted street in connection with the collection or delivery of goods from or to premises in or adjacent to that street if those goods cannot reasonably be loaded or unloaded outside the prescribed hours or within the time allowed in relation to that street if notice has been given twenty-four hours in advance to the police, Council or authorised agent, their consent obtained and such reasonable conditions as may be imposed are complied with.

15. PARKING PERMISSIONS IN RELATION TO FREE ON-STREET PARKING PLACES AND RESTRICTED STREETS

- 15.1. Any person may apply to the Council for a Parking Permission in respect of any vehicle, either: for the purposes of leaving the vehicle in a free on-street parking place during the controlled hours in respect of that free on-street parking place, or to exempt it from the restrictions specified in **Article 11**, as the case may be, and such application shall be made in the manner and contain such information as may be specified by the Council.
- 15.2. The Council may, at its sole discretion, grant a Parking Permission in respect of any vehicle if the applicant satisfies the Council's eligibility criteria and where it appears that the purpose in respect of which the application was made cannot reasonably be accomplished without the vehicle either: waiting in a parking place during the controlled hours, or waiting in a restricted street during the prescribed or restricted hours, as the case may be.
- 15.3. The charge for a Parking Permission shall be as set out in **item 4 of Schedule 3**.
- 15.4. On being satisfied that the applicant meets the conditions expressed in **Article 15.2** and on payment of the charge specified in **Article 15.3**, the Council or its authorised agent will create a record in the electronic permits system showing that a Parking Permission has been granted in respect of the vehicle exempting it from the restrictions specified in either **Article 4** or **Article 11** insofar that it may wait in whichever free on-street parking place, or restricted street, as the case may be, on whatever day or days and during such times as may be agreed.
- 15.5. An indication that the vehicle has been exempted from the restrictions specified in by either **Article 4** or **Article 11**, as the case may be, by virtue of this Article shall be given when, on submitting the vehicle's registration mark electronically by a hand-held device or by other means, confirmation is received electronically through the hand-held device or is otherwise confirmed that a record exists in the electronic permits system of the vehicle

being granted a Parking Permission to wait in the location in which is waiting, on the day and at the time that the registration mark was submitted.

- 15.6. Notwithstanding the above provisions, a Parking Permission may be issued in the form of writing, to be displayed inside the vehicle, containing such details as the Council may consider appropriate in order for it to be conveyed that the vehicle has been exempted from the restrictions specified in **Article 4** or **Article 11**, as the case may be.

16. DUTY TO MOVE ON

- 16.1. Notwithstanding any exception or exemption contained in this Order, the person in control of a vehicle waiting during the prescribed hours in any restricted street shall move the vehicle on the instructions of a police constable in uniform or a civil enforcement officer whenever such moving may be reasonably necessary for the purpose of preventing or removing an obstruction.

17. RESTRICTIONS ON METHODS OF LOADING OR UNLOADING IN RESTRICTED STREETS

- 17.1. No person shall cause any goods to be loaded on to or unloaded from any vehicle in any restricted street otherwise than in accordance with the following conditions:
- 17.1.1. No such goods shall be deposited on any carriageway or footway except on the carriageway immediately at the rear of the vehicle and no goods shall remain on any carriageway before the arrival of or after the departure of the vehicle;
- 17.1.2. No part of any rope, chain, wire, apparatus, or machinery used in connection with such loading or unloading, and no load suspended therefrom shall be less than 4.88 metres above a carriageway, except when over any vehicle being loaded or unloaded, or less than 2.74 metres above the footway;
- 17.1.3. No goods shall be passed from hand to hand across any part of carriageway or footway.
- 17.2. Nothing in **Article 17.1** shall apply in relation to any vehicle while it is being used as mentioned in **Article 12.2.3**, or anything done with the permission or at the direction of a police constable in uniform or a civil enforcement officer.
- 17.3. Nothing in **Article 17.1.2** shall apply to any pipe, apparatus or machinery being used in connection with the loading or unloading of any petrol, water, oil or liquid fuel on to or from any vehicle in any street or from any premises adjacent to any street, provided that all necessary means are taken to give adequate warning of any possible obstruction.

18. RESTRICTION ON STREET TRADING IN RELATION TO RESTRICTED STREETS

- 18.1. No person shall, on any day, sell, offer or expose for sale goods from a vehicle which is in any restricted street unless the goods are immediately delivered at or taken into premises adjacent to the vehicle from which the sale is effected.

19. RESTRICTION OF ENGINE IDLING IN A FREE ON-STREET PARKING PLACE OR RESTRICTED STREET

- 19.1. No person shall cause any vehicle to wait in any part of a free on-street parking place or restricted street unless the driver of that vehicle shall turn off the engine of that vehicle as soon as the vehicle is in position and stationary and shall not start the engine again except when about to change the position of the vehicle or to depart from that free on-street parking place or restricted street.
- 19.2. Notwithstanding the provisions of **Article 19.1**, the driver of a vehicle shall, when the vehicle is waiting in any part of a free on-street parking place or restricted street, stop the action of any machinery attached to or forming part of the vehicle in so far as is necessary for the prevention of noise or of exhaust emissions (as defined in regulation 3 of the Road Vehicles (Construction and Use) Regulations 1986 (SI 1986/1078), as amended by the Road Vehicles (Construction and Use) (Amendment) Regulations 1998 (SI 1998/1)).
- 19.3. Nothing in **Article 19.1** or **19.2** of this Order shall apply:-
- 19.3.1. when the vehicle is waiting owing to the necessities of traffic;
 - 19.3.2. so as to prevent the examination or working of the engine of that vehicle or machinery attached to or forming part of the vehicle where the examination is necessitated by any failure or derangement of the engine or the machinery, or where the driver of the vehicle is unable to stop the action of the engine or machinery owing to a failure or derangement of the machinery over which they have no control, or where the machinery attached to or forming part of the vehicle is required to be worked for a purpose other than driving the vehicle;
 - 19.3.3. when the vehicle is waiting only for so long as may be necessary for the purposes of enabling any person to board or alight from the vehicle or to load thereon or unload therefrom their personal luggage;
 - 19.3.4. to an electric vehicle;
 - 19.3.5. in respect of a vehicle propelled by gas produced in plant carried on the vehicle, to such plant;
 - 19.3.6. to a vehicle being used for police, fire brigade or ambulance purposes; or
 - 19.3.7. to anything done with the permission or at the direction of a police constable in uniform or a civil enforcement officer.

20. CONTRAVENTION OF PART B OF THIS ORDER

- 20.1. If a vehicle is left in a free on-street parking place or restricted street without complying with the provisions of this Part of the Order, then a contravention of, or failure to comply with, the provisions of this Order shall be deemed to have occurred.

PART C - DESIGNATION AND USE OF CHARGED-FOR ON-STREET PARKING PLACES

NOTE: The provisions of this Part of the Order are those derived from the powers conferred upon the Council under sections 45, 46 and 49 of the 1984 Act.

21. DESIGNATION OF CHARGED-FOR ON-STREET PARKING PLACES

- 21.1. Each area on a street identified on the map based schedule as a charged-for on-street parking place and, if appropriate, by way of a tile label or the map schedule legend, or both, as an area marked out and signed for the use therein of specified classes of vehicles following the conditions specified in this Order in relation to that charged-for on-street parking place, is a designated charged-for on-street parking place.
- 21.2. Unless otherwise so identified, a charged-for on-street parking place shall be bounded on one side of its length by the edge of the carriageway and be an area marked out to a road marking and depicted by a regulatory sign, either in accordance with the 2016 Regulations, or if applicable, by virtue of any special authorisation given by the Department for Transport.

22. VEHICLES FOR WHICH CHARGED-FOR ON-STREET PARKING PLACES ARE DESIGNATED

- 22.1. Each charged-for on-street parking place shall only be used, subject to the provisions of this Part of the Order, for the leaving during the controlled parking period of vehicles of the following class, that is: passenger vehicles, or goods vehicles that fit wholly within the limits of a free on-street parking place and the overall height of which does not exceed 2.3 metres, or motorcycles.

Provided that the Council reserves the right to withdraw the above provision in respect of a particular vehicle in respect of any charged-for on-street parking place if that vehicle is considered by the Council to be unsuitable to be left in that location, regardless of compliance with the vehicle size criteria stated above.

- 22.2. Each charged-for on-street parking place being a residents' parking place may be used, subject to the provisions of this Order, for the leaving during the controlled parking period of such vehicles of the class specified in **Article 22.1** as either: display in the relevant position a valid Residents' Permit or a valid Visitors' Permit, or in respect of which there has been granted a valid Residents' Permit or a valid Visitors' Permit.

Provided that: where a charged-for on-street parking place is not allocated to a specified permit holder, the housing estate parking zone identified on that Residents' Permit or Visitors' Permit or on a hand-held device in relation to that Residents' Permit or Visitors' Permit, is the housing estate parking zone identified by way of a permit identifier on a traffic sign relating to that residents' parking place; and where a charged-for on-street parking place is allocated to

a specified permit holder, the permit number identified on that Residents' Permit or Visitors' Permit or on a hand-held device in relation to that Residents' Permit or Visitors' Permit, is the permit number identified by way of a permit identifier on a traffic sign relating to that residents' parking place.

- 22.3. Each charged-for on-street parking place being a disabled residents' parking place may be used, subject to the provisions of this Order, for the leaving during the controlled parking period of such vehicles of the class specified in **Article 22.1** as either display in the relevant position a valid Disabled Residents' Permit, or in respect of which there has been granted a valid Disabled Residents' Permit.

Provided that the Disabled Residents' Permit number identified on that Disabled Residents' Permit or on a hand-held device in relation to that Disabled Residents' Permit, is the Disabled Residents' Permit number identified by way of a permit identifier on a traffic sign relating to that disabled residents' parking place.

- 22.4. Each charged-for on-street parking place being a multi-permit parking place may be used, subject to the provisions of this Order, for the leaving during the controlled parking period of such vehicles of the class specified in **Article 22.1** as either: display in the relevant position a valid Residents' Permit or a valid Visitors' Permit or a valid Contractor Permit, or in respect of which there has been granted a valid Residents' Permit or a valid Visitors' Permit or a valid Contractor Permit.

Provided that where the housing estate parking zone, if identified on that Residents' Permit or Visitors' Permit or on a hand-held device in relation to that Residents' Permit or Visitors' Permit or Contractor permit, is the housing estate parking zone identified by way of a permit identifier on a traffic sign relating to that multi-permit parking place.

- 22.5. Each charged-for on-street parking place being a car club parking place may be used, subject to the provisions of this Order, for the leaving during the controlled parking period of such car club vehicles as either display in the relevant position a valid Car Club Permit, or in respect of which there has been granted a valid Car Club Permit.

Provided that the Car Club Permit number identified on that Car Club Permit or on a hand-held device in relation to that Car Club Permit, is the Car Club Permit number identified by way of a permit identifier on a traffic sign relating to that car club parking place.

23. GENERAL PROVISIONS RELATING TO PERMITS

- 23.1. Applications for new permits or the renewal of existing permits may be made by any manner which may be specified by the Council.
- 23.2. The granting or issuance of any permit is dependent on the applicant being able to satisfy the criteria laid down by the Council concerning eligibility for such permits and the payment of any applicable parking charge.

- 23.3. The Council may, at its sole discretion amend the eligibility criteria for any permit, waive or reduce any charge for a permit or revoke any permit at any time.
- 23.4. The Council may at any time require an applicant for a permit or a permit holder to produce to an officer of the Council such evidence as may reasonably be called for in order to verify the legitimacy of the application or the validity of the permit.
- 23.5. A permit shall immediately cease to be valid if:
- 23.5.1. the permit holder ceases to be eligible for the permit;
- 23.5.2. the permit holder ceases to be the owner of any vehicle in respect of which a permit has been granted or issued;
- 23.5.3. the vehicle in respect of which any permit has been granted or issued ceases to be of the type or class eligible for that permit;
- 23.6. On being satisfied that an applicant for any permit meets the conditions expressed in the relevant Articles pertaining to that type of permit, the Council or its authorised agent will create a record in the electronic permits system showing that a permit has been granted in respect of the vehicle, and may issue a permit for display inside a vehicle containing such particulars necessary for it to be ascertained that a permit has been granted in respect of the vehicle.
- 23.7. An indication that a permit has been granted with respect to a vehicle waiting in a parking place shall be given either: by the clear display of the permit issued in respect of the vehicle so that the particulars referred to in **Article 23.6** may be ascertained from the exterior of the vehicle or by the display of any other parking device which may be issued with respect to the vehicle, or when, on submitting the registration mark of the vehicle with a hand-held device, a response is received via the hand-held device that a permit has been granted with respect to the vehicle.

24. PROVISIONS RELATING TO RESIDENTS' PERMITS

- 24.1. Subject to the provisions of **Article 23**, any resident who is the owner of a passenger vehicle or a goods vehicle that fits wholly within the limits of a charged-for on-street parking place and the overall height of which does not exceed 2.3 metres, may submit an application to the Council for the issue or grant of a Residents' Permit for the purposes of leaving the vehicle in such parking places as are specified in **Articles 22.2** and **22.4**, or where applicable under the provisions of **Part D** of this Order, such parking bays in off-street parking places as are specified in **Articles 37.2** and **37.4**.

Provided that no Residents' Permit shall be granted or issued unless the resident applicant's rent account with the Council is in credit at time of application.

Further provided that the Council reserves the right to refuse application in respect of a particular vehicle in respect of any parking place if that vehicle is considered by the Council to be unsuitable to

be left in that location, regardless of compliance with the vehicle size criteria stated above.

- 24.2. Subject to the provisions of **Article 24.6**, Residents' Permits will be granted or issued with validity periods of either: in relation to a Residents' Permit issued or granted in respect of the Maiden Lane Estate, one year; or in relation to a Residents' Permit issued or granted in respect of a housing estate or other than the Maiden Lane Estate, one week or multiple thereof as requested by the applicant, payable four weeks or more in advance.
- 24.3. Subject to the provisions of the remainder of this Article, the parking charge payable for a Residents' Permit shall be as set out in **item 1 of Schedule 3**.
- 24.4. A Residents' Permit holder may surrender a Residents' Permit to the Council or authorised agent at any time at one weeks' notice in writing or by electronic mail.
- 24.5. The Council or authorised agent may, by notice in writing or by electronic mail served on the Residents' Permit holder, withdraw a Residents' Permit at any time and the Residents' Permit holder shall surrender that Residents' Permit to the Council or authorised agent within one week of the receipt of the aforementioned notice.
- 24.6. In respect of a application for a Residents' Permit, the Council may decide not to issue a Residents' Permit of a specific validity period or may decide only to issue a permit of a specific validity period according to the eligibility criteria for such permits and may impose such conditions prior to renewing the Residents' Permit as it considers reasonable.
- 24.7. No Residents' Permit will be issued to any resident of a property which is formally identified or designated by the London Borough of Camden in its capacity as local planning authority as being subject to any car free or car capped parking requirement or restriction this to include any identification or designation made through either:-
- 24.7.1. A planning condition imposed under section 70 of the Town and Country Planning Act 1990 (1990 c.8); or
- 24.7.2. Any legal agreement or other instrument under section 106 of the Town and Country Planning Act 1990 or section 16 of the Greater London Council (General Powers) Act 1974 (1974 c.xxiv) or other relevant power, or any combination thereof; or
- 24.7.3. Any form of formal decision taken by the local planning authority or the secretary of state in respect of the relevant property.

25. PROVISIONS RELATING TO DISABLED RESIDENTS' PERMITS

- 25.1. Subject to the provisions of **Article 23**, any resident who is a disabled person's badge holder and who is able to satisfy such criteria as may be set from time to time by the Council in relation to the issue of a Disabled Residents' Permit and who is the owner of a passenger vehicle or a goods vehicle that fits wholly within the limits of a charged-for on-street parking place and the overall height of which does not exceed 2.3 metres, may

submit an application to the Council for the issue or grant of a Disabled Residents' Permit for the purposes of leaving the vehicle in the parking place specified at the time of granting of the Disabled Residents' Permit, in accordance with the provisions of **Article 22.3** and the proviso thereto, or where applicable under the provisions of **Part D** of this Order, in the parking bay in an off-street parking place specified at the time of granting of the Disabled Residents' Permit, in accordance with the provisions of **Article 37.3** and the proviso thereto.

- 25.2. Disabled Residents' Permits will be granted or issued with a validity period of one year.
- 25.3. The parking charge payable for a Disabled Residents' Permit shall be as set out in **item 2 of Schedule 3**.
- 25.4. A Disabled Residents' Permit holder may surrender a Disabled Residents' Permit to the Council or authorised agent at any time at one weeks' notice in writing or by electronic mail.
- 25.5. The Council or authorised agent may, by notice in writing or by electronic mail served on the Disabled Residents' Permit holder, withdraw a Disabled Residents' Permit at any time and the Disabled Residents' Permit holder shall surrender that Disabled Residents' Permit to the Council or authorised agent within one week of the receipt of the aforementioned notice.
- 25.6. In respect of any application, the Council may decide not to issue a Disabled Residents' Permit of a specific validity period or may decide only to issue a permit of a specific validity period according to the eligibility criteria for such permits and may impose such conditions prior to renewing the Disabled Residents' Permit as it considers reasonable.
- 25.7. No Disabled Residents' Permit will be issued to any resident of a property which is formally identified or designated by the London Borough of Camden in its capacity as local planning authority as being subject to any car free or car capped parking requirement or restriction, this to include any identification or designation made through either:-
- 25.7.1. A planning condition imposed under section 70 of the Town and Country Planning Act 1990; or
- 25.7.2. Any legal agreement or other instrument under section 106 of the Town and Country Planning Act 1990 or section 16 of the Greater London Council (General Powers) Act 1974 or other relevant power, or any combination thereof; or
- 25.7.3. Any form of formal decision taken by the local planning authority or the secretary of state in respect of the relevant property;

Provided that nothing in **Article 25.7** shall apply in relation to a resident of a property which is identified or designated as an accessible property under the terms of a planning condition, legal agreement, instrument, or formal decision, as the case may be in relation to that property.

26. PROVISIONS RELATING TO VISITORS' PERMITS

- 26.1. Where Visitors' Permits are available for use in a specified housing estate, a resident of that housing estate may apply to the Council either online or by telephone at 48 hours notice for the issue or grant of a Visitors' Permit for the purposes of leaving a vehicle in such parking places as are specified in **Articles 22.2 and 22.4**, or where applicable under the provisions of **Part D** of this Order, such parking bays in off-street parking places as are specified in **Articles 37.2 and 37.4**.
- 26.2. Visitors' Permits will be granted or issued at the Council's discretion and are available with validity periods of either three hours, one day or one week at the election of the applicant.
- 26.3. Subject to the provisions of the remainder of this Article, the parking charge payable in respect of a Visitors' Permit shall be as set out in **item 3 of Schedule 3**.
- 26.4. The Council or authorised agent may, by notice in writing or by electronic mail served on the resident applicant, withdraw a Visitors' Permit at any time and the applicant shall surrender that Visitors' Permit to the Council or authorised agent upon receipt of the aforementioned notice.
- 26.5. In respect of any application, the Council may decide not to issue a Visitors' Permit of a specific validity period or may decide only to issue a Visitors' Permit of a specific validity period according to the eligibility criteria for such permit and may impose such conditions prior to granting or issuing the Visitors' Permit as it considers reasonable.

27. PROVISIONS RELATING TO CAR CLUB PERMITS

- 27.1. Subject to the provisions of the remainder of this Article, the Council may, at its discretion grant or issue to a car club operator a Car Club Permit for the purposes of leaving a car club vehicle in the parking place specified at the time of granting of the Car Club Permit, in accordance with the provisions of **Article 22.5** and the proviso thereto, or where applicable under the provisions of **Part D** of this Order, in the parking bay in an off-street parking place specified at the time of granting of the Car Club Permit, in accordance with the provisions of **Article 37.5** and the proviso thereto.
- 27.2. Car Club Permits will be granted or issued with a validity period to be determined at the discretion of the Council.
- 27.3. The parking charge payable for a Car Club Permit shall be as set from time to time by the Council.
- 27.4. In respect of any application, the Council may decide not to issue a Car Club Permit of a specific validity period or may decide only to issue a Car Club Permit of a specific validity period according to the eligibility criteria for such permits and may impose such conditions prior to renewing the Car Club Permit as it considers reasonable.

28. PROVISIONS RELATING TO CONTRACTOR PERMITS

- 28.1. Subject to the provisions of the remainder of this Article, the Council may, at its discretion grant or issue to a contractor a Contractor Permit for the purposes of leaving a vehicle in a multi-permit parking place, in accordance with the provisions of **Article 22.4** and the proviso thereto, or where applicable under the provisions of **Part D** of this Order, such parking bays in off-street parking places as are specified in **Article 37.4**.
- 28.2. Contractor Permits will be granted or issued with a validity period to be determined at the discretion of the Council.
- 28.3. The parking charge payable for a Contractor Permit shall be as set from time to time by the Council.
- 28.4. In respect of any application, the Council may decide not to issue a Contractor Permit of a specific validity period or may decide only to issue a Contractor Permit of a specific validity period according to the eligibility criteria for such permits and may impose such conditions prior to renewing the Contractor Permit as it considers reasonable.

29. MANNER OF STANDING IN A CHARGED-FOR ON-STREET PARKING PLACE

- 29.1. Every vehicle left in a charged-for on-street parking place which is not in a one-way street shall stand so that every part of the vehicle is within the marked limits of a charged-for on-street parking place and with its side parallel to the kerb unless the marked limits of the charged-for on-street parking place indicate that the vehicle should stand otherwise.
- 29.2. In the case of a vehicle left in a charged-for on-street parking place that is in a one-way street, the vehicle shall stand so that the near-side of the vehicle is adjacent to the left-hand edge of the carriageway or so that the off-side of the vehicle is adjacent to the right-hand edge of the carriageway unless the marked limits of the charged-for on-street parking place indicate that the vehicle should stand otherwise.

30. RESTRICTIONS ON THE USE OF CHARGED-FOR ON-STREET PARKING PLACES

- 30.1. No person shall use any charged-for on-street parking place or any vehicle whilst in a charged-for on-street parking place in connection with the sale or offering for sale of any article to any person in or near the parking place or in connection with the selling or offering for sale or hire of their skill in handicraft or their services in any other capacity.
- 30.2. The provisions of this Article shall not prevent the sale of goods from a vehicle if the vehicle is one which may be left in a charged-for on-street parking place in accordance with the provisions of **Article 22** and the goods are immediately delivered at or taken into premises adjacent to the vehicle from which the sale is offered.

31. PLACEMENT OF TRAFFIC SIGNS AND INFRASTRUCTURE IN RELATION TO CHARGED-FOR ON-STREET PARKING PLACES

- 31.1. The Council shall:
- 31.1.1. cause the limits of each charged-for on-street parking place to be indicated on the carriageway by placing and maintaining thereon appropriate traffic signs;
 - 31.1.2. place and maintain in or in the vicinity of each charged-for on-street parking place traffic signs approved by the Secretary of State for Transport indicating that such charged-for on-street parking place may be used during the controlled parking period for the leaving of vehicles specified in **Article 22**; and
 - 31.1.3. carry out such other work as may be reasonably required for the purposes of the satisfactory operation of a charged-for on-street parking place.

32. POWER TO SUSPEND THE USE OF CHARGED-FOR ON-STREET PARKING PLACES

- 32.1. The Council or the Commissioner of Police of the Metropolis may suspend the use of a charged-for on-street parking place or part of a charged-for on-street parking place whenever that person considers it reasonably necessary to do so:
- 32.1.1. to facilitate the movement of traffic or to promote its safety;
 - 32.1.2. to facilitate any building operation, demolition or excavation adjacent to the charged-for on-street parking place;
 - 32.1.3. for the maintenance, improvement or reconstruction of the road and street furniture, the cleansing of gullies or to maintain trees adjacent to the charged-for on-street parking place;
 - 32.1.4. to facilitate the laying, erection, alteration, removal or repair in or adjacent to the charged-for on-street parking place of any sewer, mains or pipe for the supply of water, gas, electricity or of any electronic communications apparatus;
 - 32.1.5. for the convenience of occupiers of premises adjacent to the charged-for on-street parking place on any occasion of the removal of furniture to or from one office or dwelling-house adjacent to the charged-for on-street parking place from or to a depository, another office or dwelling-house;
 - 32.1.6. on any occasion on which it is likely by reason of some special attraction that any street will be thronged or obstructed or to facilitate filming work;
 - 32.1.7. for the convenience of occupiers of premises adjacent to the charged-for on-street parking place on the occasion of weddings, funerals, or other special occasions.
- 32.2. A police constable in uniform may suspend for not longer than twenty-four hours the use of a charged-for on-street parking place or any part thereof whenever he or she considers such suspension reasonably necessary for the purpose of facilitating the movement of traffic or promoting its safety.

- 32.3. The suspension of a charged-for on-street parking place or part of a charged-for on-street parking place shall be indicated by the placement in or adjacent to the charged-for on-street parking place of traffic signage of such type as may be prescribed or authorised under section 64 or 65 of the 1984 Act indicating that the waiting of vehicles is prohibited and the Council may temporarily remove or replace any permanent traffic signage in order to convey the same effect.
- 32.4. No person shall cause or permit a vehicle to wait in any part of a charged-for on-street parking place during such period as there is in or adjacent to that charged-for on-street parking place a traffic sign placed in pursuance of **Article 32.3**.
- 32.5. Nothing in this Article shall apply in respect of any vehicle which is waiting for any reason specified in **Articles 33.1.2, 33.1.4, or 33.1.5**, or with the permission of the person suspending the use of all or part of the charged-for on-street parking place or a police constable in uniform or any person duly authorised by the Council.

33. EXEMPTIONS TO RESTRICTIONS IN RELATION TO CHARGED-FOR ON-STREET PARKING PLACES

- 33.1. Notwithstanding the foregoing provisions of this Order any vehicle may wait during the controlled parking period in any part of a charged-for on-street parking place if the use of that part has not been suspended and if:
- 33.1.1. the vehicle is waiting only for so long as is necessary to enable a person to board or alight from the vehicle;
- 33.1.2. the vehicle is waiting due to circumstances beyond the reasonable control of the driver, in order to avoid an accident or on the instruction of a police officer in uniform or civil enforcement officer;
- 33.1.3. the vehicle is an ambulance or is being used for fire brigade or police purposes or is in the service of the Council and is being used in pursuance of statutory powers or duties;
- 33.1.4. the vehicle is waiting only for as long as may be necessary to enable it to be used in connection with the removal of any obstruction to traffic;
- 33.1.5. the vehicle not being a passenger vehicle is waiting while postal packets addressed to premises adjacent to the charged-for on-street parking place in which the vehicle is waiting are being unloaded from the vehicle or, having been unloaded, are being delivered or while postal packets are being collected for loading onto the vehicle from premises or posting boxes adjacent to the charged-for on-street parking place in which the vehicle is waiting or, having been so collected, are being loaded thereon;
- 33.1.6. the vehicle not being a passenger vehicle is waiting only for so long as may be reasonably necessary to enable it to be used for any purposes specified in **Articles 32.1.2, 32.1.3, or 32.1.4**;
- 33.1.7. in any other case the vehicle is waiting for the purpose of delivering or collecting goods or loading or unloading goods from the vehicle at premises adjacent to the charged-for on-street parking place in which the vehicle is

waiting and the vehicle does not wait for such purposes for more than twenty minutes or such longer period as a police constable in uniform or civil enforcement officer may approve.

34. PARKING PERMISSIONS IN RELATION TO CHARGED-FOR ON-STREET PARKING PLACES

- 34.1. Any person may apply to the Council for a Parking Permission in respect of any vehicle, either: for the purposes of leaving the vehicle in a charged-for on-street parking place during the controlled hours in respect of that charged-for on-street parking place and such application shall be made in the manner and contain such information as may be specified by the Council.
- 34.2. The Council may, at its sole discretion, grant a Parking Permission in respect of any vehicle if the applicant satisfies the Council's eligibility criteria and where it appears that the purpose in respect of which the application was made cannot reasonably be accomplished without the vehicle waiting in a charged-for parking place during the controlled hours.
- 34.3. The charge for a Parking Permission shall be as set out in **item 4 of Schedule 3**.
- 34.4. On being satisfied that the applicant meets the conditions expressed in **Article 34.2** and on payment of the charge specified in **Article 34.3**, the Council or its authorised agent will create a record in the electronic permits system showing that a Parking Permission has been granted in respect of the vehicle exempting it from the restrictions specified in **Article 22** insofar that it may wait in whichever charged-for on-street parking place, on whatever day or days and during such times as may be agreed.
- 34.5. An indication that the vehicle has been exempted from the restrictions specified in **Article 22** by virtue of this Article shall be given when, on submitting the vehicle's registration mark electronically by a hand-held device or by other means, confirmation is received electronically through the hand-held device or is otherwise confirmed that a record exists in the electronic permits system of the vehicle being granted a Parking Permission to wait in the location in which is waiting, on the day and at the time that the registration mark was submitted.
- 34.6. Notwithstanding the above provisions, a Parking Permission may be issued in the form of writing to be displayed inside the vehicle containing such details the Council may consider appropriate in order for it to be conveyed that the vehicle has been exempted from the restrictions specified in **Article 22**.

35. RESTRICTION OF ENGINE IDLING IN A CHARGED-FOR ON-STREET PARKING PLACE

- 35.1. No person shall cause any vehicle to wait in any part of a charged-for on-street parking place unless the driver of that vehicle shall turn off the engine of that vehicle as soon as the vehicle is in position and stationary and shall

not start the engine again except when about to change the position of the vehicle or to depart from that charged-for on-street parking place.

- 35.2. Notwithstanding the provisions of **Article 35.1**, the driver of a vehicle shall, when the vehicle is waiting in any part of a charged-for on-street parking place, stop the action of any machinery attached to or forming part of the vehicle in so far as is necessary for the prevention of noise or of exhaust emissions (as defined in regulation 3 of the Road Vehicles (Construction and Use) Regulations 1986, as amended by the Road Vehicles (Construction and Use) (Amendment) Regulations 1998).
- 35.3. Nothing in **Article 35.1** or **35.2** of this Order shall apply:-
- 35.3.1. when the vehicle is waiting owing to the necessities of traffic;
- 35.3.2. so as to prevent the examination or working of the engine of that vehicle or machinery attached to or forming part of the vehicle where the examination is necessitated by any failure or derangement of the engine or the machinery, or where the driver of the vehicle is unable to stop the action of the engine or machinery owing to a failure or derangement of the machinery over which they have no control, or where the machinery attached to or forming part of the vehicle is required to be worked for a purpose other than driving the vehicle;
- 35.3.3. when the vehicle is waiting only for so long as may be necessary for the purposes of enabling any person to board or alight from the vehicle or to load thereon or unload therefrom their personal luggage;
- 35.3.4. to an electric vehicle;
- 35.3.5. in respect of a vehicle propelled by gas produced in plant carried on the vehicle, to such plant;
- 35.3.6. to a vehicle being used for police, fire brigade or ambulance purposes; or
- 35.3.7. to anything done with the permission or at the direction of a police constable in uniform or a civil enforcement officer.

36. CONTRAVENTION OF PART C OF THIS ORDER

- 36.1. If a vehicle is left in a charged-for on-street parking place without complying with the provisions of this Part of the Order, then a contravention of, or failure to comply with, the provisions of this Order shall be deemed to have occurred.

PART D - USE OF OFF-STREET PARKING PLACES

NOTE: The provisions of this Part of the Order are those derived from the powers conferred upon the Council under section 35 of the 1984 Act.

37. USE OF A PARKING BAY IN AN OFF-STREET PARKING PLACE

- 37.1. Each parking bay in an off-street parking place shall only be used, subject to the provisions of this Part of this Order, unless otherwise so specified, for the leaving during the controlled parking period of vehicles of the following class, that is: passenger vehicles, or goods vehicles that fit wholly within the limits of a parking bay within an off-street parking place and the overall height of which does not exceed 2.3 metres, or motorcycles.

Provided that the Council reserves the right to withdraw the above provision in respect of a particular vehicle in respect of any off-street parking place or parking bay within an off-street parking places, as the case may be, if that vehicle is considered by the Council to be unsuitable to be left in that location, regardless of compliance with the vehicle size criteria stated above.

- 37.2. Each parking bay in an off-street parking place being a residents' parking bay may be used, subject to the provisions of this Order, for the leaving during the controlled parking period of such vehicles of the class specified in **Article 37.1** as either: display in the relevant position a valid residents' permit or a valid visitors' permit, or in respect of which there has been granted a valid residents' permit or a valid visitors' permit.

Provided that the housing estate parking zone, identified on that residents' permit or visitors' permit or on a hand-held device in relation to that residents' permit or visitors' permit, is the housing estate parking zone identified by way of a permit identifier on a traffic sign relating to that residents' parking bay.

- 37.3. Each parking bay in an off-street parking place being a Disabled Residents' parking bay may be used, subject to the provisions of this Order, for the leaving during the controlled parking period of such vehicles of the class specified in **Article 37.1** as either: display in the relevant position a valid Disabled Residents' permit, or in respect of which there has been granted a valid Disabled Residents' permit.

Provided that the Disabled Residents' permit number identified on that Disabled Residents' permit or on a hand-held device in relation to that Disabled Residents' permit, is the Disabled Residents' permit number identified by way of a permit identifier on a traffic sign relating to that Disabled Residents' parking bay.

- 37.4. Each parking bay in an off-street parking place being a multi-permit parking bay may be used, subject to the provisions of this Order, for the leaving during the controlled parking period of such vehicles of the class specified in **Article 37.1** as either: display in the relevant position a valid residents' permit or a valid visitors' permit or a valid contractor permit, or in respect of which

there has been granted a valid residents' permit or a valid visitors' permit or a valid contractor permit.

Provided that where the housing estate parking zone, if identified on that residents' permit or visitors' permit or on a hand-held device in relation to that residents' permit or visitors' permit, is the housing estate parking zone identified by way of a permit identifier on a traffic sign relating to that multi-permit parking bay.

- 37.5. Each parking bay in an off-street parking place being a car club parking bay may be used, subject to the provisions of this Order, for the leaving during the controlled parking period of such vehicles of the class specified in **Article 37.1** as either: display in the relevant position a valid car club permit, or in respect of which there has been granted a valid car club permit.

Provided that the car club permit number identified on that car club permit or on a hand-held device in relation to that car club permit, is the car club permit number identified by way of a permit identifier on a traffic sign relating to that car club parking bay.

- 37.6. Each parking bay in an off-street parking place being a disabled persons blue badge parking bay may be used, subject to the provisions of this Order, for the leaving during the controlled parking period of such vehicles of the class specified in **Article 37.1** as display in the relevant position a valid disabled persons badge.
- 37.7. Each parking bay in an off-street parking place being an electric vehicle charging point parking bay may be used, subject to the provisions of this Order, for the leaving during the controlled parking period of such electric vehicles as are connected and charging via a charging lead to a charging post relating to that electric vehicle charging point parking bay.
- 37.8. Each parking bay in an off-street parking place being a motorcycle parking place may be used, subject to the provisions of this Order, for the leaving during the controlled parking period of such vehicles as are motorcycles.
- 37.9. Each parking bay in an off-street parking place being a parking bay reserved for loading and unloading may be used, subject to the provisions of this Order, for the leaving during the controlled parking period of such vehicles as are passenger vehicles, goods vehicles, or motorcycles.

38. PROVISIONS RELATING TO PERMITS FOR USE IN PARKING BAYS IN AN OFF-STREET PARKING PLACE

- 38.1. Provisions relating to the grant or issue and use of permits for use in parking bays in off-street parking places shall be as specified in **Article 23** and **Articles 24** or **25** or **26** or **27** or **28**, as the case may be, of **Part C** of this Order, and where such permits are used in relation to parking bays in off-street parking places, such permits will have effect as though issued or granted and the conditions for use thereof specified under section 35 of the 1984 Act.

39. MANNER OF STANDING IN AN OFF-STREET PARKING PLACE

- 39.1. Every vehicle left in an off-street parking place in accordance with the foregoing provisions of this Part of the Order shall stand so that every part of the vehicle is within the marked limits of a parking bay.

40. OTHER CONDITIONS OF USE OF AN OFF-STREET PARKING PLACE

- 40.1. No person shall cause any vehicle to be left in an off-street parking place other than wholly within the limits of a parking bay.
- 40.2. No person shall use any parking bay in an off-street parking place or any vehicle whilst in an off-street parking place in connection with the sale or offering for sale of any article to any person in or near the parking place or in connection with the selling or offering for sale or hire of their skill in handicraft or their services in any other capacity.
- 40.3. The provisions of **Article 40.2** shall not prevent the sale of goods from a vehicle if the vehicle is one which may be left in an off-street parking place in accordance with the provisions of **Article 37** and the goods are immediately delivered at or taken into premises adjacent to the vehicle from which the sale is offered.
- 40.4. No person shall use any parking bay in an off-street parking place for the purpose of major vehicle repairs, and no repairs other than those which are completed within 24 hours may be carried out.
- 40.5. No person shall cause or allow to be done anything in an off-street parking place which may be considered a nuisance, or which may cause damage or inconvenience to the Council, or the Council's Tenants, or to the occupiers of properties adjoining the off-street parking place.
- 40.6. The Council shall not be liable for any loss, or damage, or injury caused by the vehicle or by its driver, or caused to the vehicle or its driver whilst the vehicle is left or driven in an off-street parking place.

41. PLACEMENT OF TRAFFIC SIGNS AND INFRASTRUCTURE IN RELATION TO OFF-STREET PARKING PLACES

- 41.1. The Council shall:
- 41.1.1. cause the limits of each off-street parking place, and where appropriate, each parking bay, to be indicated by the placing and maintaining of appropriate traffic signs or surface markings;
- 41.1.2. place and maintain in or in the vicinity of each off-street parking place or parking bay traffic signs indicating that such off-street parking place or parking bay may be used during the controlled parking period for the leaving of vehicles specified in **Article 37**;
- 41.1.3. install a charging post or posts in such position as they think fit in or in the vicinity of each electric vehicle charging point parking bay; and

- 41.1.4. carry out such other work as may be reasonably required for the purposes of the satisfactory operation of an off-street parking place.

42. POWER TO SUSPEND THE USE OF AN OFF-STREET PARKING PLACE

- 42.1. The Council or the Commissioner of Police of the Metropolis may suspend the use of an off-street parking place or part of an off-street parking place or parking bay whenever that person considers it reasonably necessary to do so:
- 42.1.1. to facilitate the movement of traffic or to promote its safety;
- 42.1.2. to facilitate any building operation, demolition or excavation adjacent to the off-street parking place;
- 42.1.3. for the maintenance, improvement or reconstruction of the road and street furniture, the cleansing of gullies or to maintain trees adjacent to the off-street parking place;
- 42.1.4. to facilitate the laying, erection, alteration, removal or repair in or adjacent to the off-street parking place of any sewer, mains or pipe for the supply of water, gas, electricity or of any electronic communications apparatus;
- 42.1.5. for the convenience of occupiers of premises adjacent to the off-street parking place on any occasion of the removal of furniture to or from one office or dwelling-house adjacent to the off-street parking place from or to a depository, another office or dwelling-house;
- 42.1.6. for the convenience of occupiers of premises adjacent to the off-street parking place on the occasion of weddings, funerals, or other special occasions.
- 42.2. A police constable in uniform may suspend for not longer than twenty-four hours the use of an off-street parking place or any part thereof whenever he or she considers such suspension reasonably necessary for the purpose of facilitating the movement of traffic or promoting its safety.
- 42.3. The suspension of an off-street parking place or part of an off-street parking place shall be indicated by the placement in or adjacent to the off-street parking place of an appropriate traffic sign indicating that the waiting of vehicles is prohibited and the Council may temporarily remove or replace any permanent traffic signage in order to convey the same effect.
- 42.4. No person shall cause or permit a vehicle to wait in any part of an off-street parking place during such period as there is in or adjacent to that off-street parking place a traffic sign placed in pursuance of **Article 42.3**.
- 42.5. Nothing in this Article shall apply in respect of any vehicle which is waiting for any reason specified in **Articles 43.1.2, 43.1.4, or 43.1.5**, or with the permission of the person suspending the use of all or part of the off-street parking place or a police constable in uniform or any person duly authorised by the Council.

43. EXEMPTIONS TO RESTRICTIONS IN RELATION TO OFF-STREET PARKING PLACES

- 43.1. Notwithstanding the foregoing provisions of this Order any vehicle may wait during the controlled parking period in any part of an off-street parking place if the use of that part has not been suspended and if:
- 43.1.1. the vehicle is waiting only for so long as is necessary to enable a person to board or alight from the vehicle;
 - 43.1.2. the vehicle is waiting due to circumstances beyond the reasonable control of the driver, in order to avoid an accident or on the instruction of a police officer in uniform or civil enforcement officer;
 - 43.1.3. the vehicle is an ambulance or is being used for fire brigade or police purposes or is in the service of the Council and is being used in pursuance of statutory powers or duties;
 - 43.1.4. the vehicle is waiting only for as long as may be necessary to enable it to be used in connection with the removal of any obstruction to traffic;
 - 43.1.5. the vehicle not being a passenger vehicle is waiting while postal packets addressed to premises adjacent to the off-street parking place in which the vehicle is waiting are being unloaded from the vehicle or, having been unloaded, are being delivered or while postal packets are being collected for loading onto the vehicle from premises or posting boxes adjacent to the off-street parking place in which the vehicle is waiting or, having been so collected, are being loaded thereon;
 - 43.1.6. the vehicle not being a passenger vehicle is waiting only for so long as may be reasonably necessary to enable it to be used for any purposes specified in **Articles 42.1.2, 42.1.3, or 42.1.4**;
 - 43.1.7. in any other case the vehicle is waiting for the purpose of delivering or collecting goods or loading or unloading goods from the vehicle at premises adjacent to the off-street parking place in which the vehicle is waiting and the vehicle does not wait for such purposes for more than twenty minutes or such longer period as a police constable in uniform or civil enforcement officer may approve.

44. PARKING PERMISSIONS IN RELATION TO OFF-STREET PARKING PLACES

- 44.1. Any person may apply to the Council for a Parking Permission in respect of any vehicle, either: for the purposes of leaving the vehicle in an off-street parking place during the controlled hours in respect of that off-street parking place and such application shall be made in in the manner and contain such information as may be specified by the Council.
- 44.2. The Council may, at its sole discretion, grant a Parking Permission in respect of any vehicle if the applicant satisfies the Council's eligibility criteria and where it appears that the purpose in respect of which the application was made cannot reasonably be accomplished without the vehicle waiting in an off-street parking place during the controlled hours.

- 44.3. The charge for a Parking Permission shall be as set out in **item 4 of Schedule 3**.
- 44.4. On being satisfied that the applicant meets the conditions expressed in **Article 44.2** and on payment of the charge specified in **Article 44.3**, the Council or its authorised agent will create a record in the electronic permits system showing that a Parking Permission has been granted in respect of the vehicle exempting it from the restrictions specified in **Article 37** insofar that it may wait in whichever off-street parking place, on whatever day or days and during such times as may be agreed.
- 44.5. An indication that the vehicle has been exempted from the restrictions specified in **Article 37** by virtue of this Article shall be given when, on submitting the vehicle's registration mark electronically by a hand-held device or by other means, confirmation is received electronically through the hand-held device or is otherwise confirmed that a record exists in the electronic permits system of the vehicle being granted a Parking Permission to wait in the location in which is waiting, on the day and at the time that the registration mark was submitted.
- 44.6. Notwithstanding the above provisions, a Parking Permission may be issued in the form of writing to be displayed inside the vehicle containing such details the Council may consider appropriate in order for it to be conveyed that the vehicle has been exempted from the restrictions specified in **Article 37**.

45. RESTRICTION OF ENGINE IDLING IN AN OFF-STREET PARKING PLACE

- 45.1. No person shall cause any vehicle to wait in any part of an off-street parking place unless the driver of that vehicle shall turn off the engine of that vehicle as soon as the vehicle is in position and stationary and shall not start the engine again except when about to change the position of the vehicle or to depart from that off-street parking place.
- 45.2. Notwithstanding the provisions of **Article 45.1**, the driver of a vehicle shall, when the vehicle is waiting in any part of an off-street parking place, stop the action of any machinery attached to or forming part of the vehicle in so far as is necessary for the prevention of noise or of exhaust emissions (as defined in regulation 3 of the Road Vehicles (Construction and Use) Regulations 1986, as amended by the Road Vehicles (Construction and Use) (Amendment) Regulations 1998).
- 45.3. Nothing in **Article 45.1** or **45.2** of this Order shall apply:-
- 45.3.1. when the vehicle is waiting owing to the necessities of traffic;
- 45.3.2. so as to prevent the examination or working of the engine of that vehicle or machinery attached to or forming part of the vehicle where the examination is necessitated by any failure or derangement of the engine or the machinery, or where the driver of the vehicle is unable to stop the action of the engine or machinery owing to a failure or derangement of the machinery over which they have no control, or where the machinery attached to or forming part of

the vehicle is required to be worked for a purpose other than driving the vehicle;

- 45.3.3. when the vehicle is waiting only for so long as may be necessary for the purposes of enabling any person to board or alight from the vehicle or to load thereon or unload therefrom their personal luggage;
- 45.3.4. to an electric vehicle;
- 45.3.5. in respect of a vehicle propelled by gas produced in plant carried on the vehicle, to such plant;
- 45.3.6. to a vehicle being used for police, fire brigade or ambulance purposes; or
- 45.3.7. to anything done with the permission or at the direction of a police constable in uniform or a civil enforcement officer.

46. CONTRAVENTION OF PART D OF THIS ORDER

- 46.1. If a vehicle is left in an off-street parking place without complying with the provisions of this Part of the Order, then a contravention of, or failure to comply with, the provisions of this Order shall be deemed to have occurred.

SCHEDULE 1 - MAP TILE LIST

(see Article 2.1 – definition of “map based schedule”)

Map tile list	Version	Effective Date
AR43	V**	{date TBC}
AS43	V**	{date TBC}
AS44	V**	{date TBC}
AT43	V**	{date TBC}
AT44	V**	{date TBC}
AU43	V**	{date TBC}
AU44	V**	{date TBC}
AU45	V**	{date TBC}
AU46	V**	{date TBC}
AU47	V**	{date TBC}
AU50	V**	{date TBC}
AV43	V**	{date TBC}
AV44	V**	{date TBC}
AV45	V**	{date TBC}
AV46	V**	{date TBC}
AV47	V**	{date TBC}
AV50	V**	{date TBC}
AW43	V**	{date TBC}
AW44	V**	{date TBC}
AW45	V**	{date TBC}
AW46	V**	{date TBC}

Map tile list	Version	Effective Date
AW47	V**	{date TBC}
AW50	V**	{date TBC}
AX43	V**	{date TBC}
AX44	V**	{date TBC}
AX45	V**	{date TBC}
AX46	V**	{date TBC}
AX47	V**	{date TBC}
AX50	V**	{date TBC}
AY43	V**	{date TBC}
AY44	V**	{date TBC}
AY45	V**	{date TBC}
AY46	V**	{date TBC}
AY47	V**	{date TBC}
AY50	V**	{date TBC}
AZ42	V**	{date TBC}
AZ43	V**	{date TBC}
AZ44	V**	{date TBC}
AZ45	V**	{date TBC}
AZ46	V**	{date TBC}

SCHEDULE 2 – PERMIT ELIGIBLE PROPERTIES

(see Article 2.1 – definition of “resident” - excepting any premises which are required to be “car free”)

Building Number	Street	Postcode
28	Allensbury Place	NW1 9YR
13	Allensbury Place	NW1 9YR
21	Allensbury Place	NW1 9YR
5	Allensbury Place	NW1 9YR
29	Allensbury Place	NW1 9YR
12	Allensbury Place	NW1 9YR
20	Allensbury Place	NW1 9YR
4	Allensbury Place	NW1 9YR
26	Allensbury Place	NW1 9YR
2	Allensbury Place	NW1 9YR
10	Allensbury Place	NW1 9YR
18	Allensbury Place	NW1 9YR
30	Allensbury Place	NW1 9YR
14	Allensbury Place	NW1 9YR
22	Allensbury Place	NW1 9YR
6	Allensbury Place	NW1 9YR
23	Allensbury Place	NW1 9YR
24	Allensbury Place	NW1 9YR
16	Allensbury Place	NW1 9YR
7	Allensbury Place	NW1 9YR
8	Allensbury Place	NW1 9YR
15	Allensbury Place	NW1 9YR
25	Allensbury Place	NW1 9YR
1	Allensbury Place	NW1 9YR
9	Allensbury Place	NW1 9YR
17	Allensbury Place	NW1 9YR
27	Allensbury Place	NW1 9YR
11	Allensbury Place	NW1 9YR
19	Allensbury Place	NW1 9YR
3	Allensbury Place	NW1 9YR
31	Allensbury Place	NW1 9YR
31	Allensbury Place	NW1 9YR
31	Allensbury Place	NW1 9YR
31	Allensbury Place	NW1 9YR
31	Allensbury Place	NW1 9YR
31	Allensbury Place	NW1 9YR
31	Allensbury Place	NW1 9YR
31	Allensbury Place	NW1 9YR
31	Allensbury Place	NW1 9YR

31	Allensbury Place	NW1 9YR
18	Bowmore Walk	NW1 9XY
5	Bowmore Walk	NW1 9XY
1	Bowmore Walk	NW1 9XY
9	Bowmore Walk	NW1 9XY
2	Bowmore Walk	NW1 9XY
8	Bowmore Walk	NW1 9XY
3	Bowmore Walk	NW1 9XY
7	Bowmore Walk	NW1 9XY
6	Bowmore Walk	NW1 9XY
11	Bowmore Walk	NW1 9XY
4	Bowmore Walk	NW1 9XY
14	Bowmore Walk	NW1 9XY
10	Bowmore Walk	NW1 9XY
13	Bowmore Walk	NW1 9XY
12	Bowmore Walk	NW1 9XY
17	Bowmore Walk	NW1 9XY
15	Bowmore Walk	NW1 9XY
16	Bowmore Walk	NW1 9XY
3	Broadfield Lane	NW1 9YJ
9	Broadfield Lane	NW1 9YJ
10	Broadfield Lane	NW1 9YJ
17	Broadfield Lane	NW1 9YJ
29	Broadfield Lane	NW1 9YJ
5	Broadfield Lane	NW1 9YJ
67	Broadfield Lane	NW1 9YJ
68	Broadfield Lane	NW1 9YJ
69	Broadfield Lane	NW1 9YJ
62	Broadfield Lane	NW1 9YJ
63	Broadfield Lane	NW1 9YJ
64	Broadfield Lane	NW1 9YJ
65	Broadfield Lane	NW1 9YJ
70	Broadfield Lane	NW1 9YJ
22	Broadfield Lane	NW1 9YJ
23	Broadfield Lane	NW1 9YJ
24	Broadfield Lane	NW1 9YJ
25	Broadfield Lane	NW1 9YJ
19	Broadfield Lane	NW1 9YJ
20	Broadfield Lane	NW1 9YJ
21	Broadfield Lane	NW1 9YJ
30	Broadfield Lane	NW1 9YJ
26	Broadfield Lane	NW1 9YJ
27	Broadfield Lane	NW1 9YJ
28	Broadfield Lane	NW1 9YJ

58	Broadfield Lane	NW1 9YJ
59	Broadfield Lane	NW1 9YJ
60	Broadfield Lane	NW1 9YJ
61	Broadfield Lane	NW1 9YJ
55	Broadfield Lane	NW1 9YJ
56	Broadfield Lane	NW1 9YJ
57	Broadfield Lane	NW1 9YJ
66	Broadfield Lane	NW1 9YJ
34	Broadfield Lane	NW1 9YJ
35	Broadfield Lane	NW1 9YJ
36	Broadfield Lane	NW1 9YJ
37	Broadfield Lane	NW1 9YJ
31	Broadfield Lane	NW1 9YJ
32	Broadfield Lane	NW1 9YJ
33	Broadfield Lane	NW1 9YJ
4	Broadfield Lane	NW1 9YJ
6	Broadfield Lane	NW1 9YJ
38	Broadfield Lane	NW1 9YJ
1	Broadfield Lane	NW1 9YJ
2	Broadfield Lane	NW1 9YJ
11	Broadfield Lane	NW1 9YJ
12	Broadfield Lane	NW1 9YJ
13	Broadfield Lane	NW1 9YJ
7	Broadfield Lane	NW1 9YJ
8	Broadfield Lane	NW1 9YJ
18	Broadfield Lane	NW1 9YJ
39	Broadfield Lane	NW1 9YJ
40	Broadfield Lane	NW1 9YJ
41	Broadfield Lane	NW1 9YJ
14	Broadfield Lane	NW1 9YJ
15	Broadfield Lane	NW1 9YJ
16	Broadfield Lane	NW1 9YJ
46	Broadfield Lane	NW1 9YJ
47	Broadfield Lane	NW1 9YJ
48	Broadfield Lane	NW1 9YJ
49	Broadfield Lane	NW1 9YJ
42	Broadfield Lane	NW1 9YJ
43	Broadfield Lane	NW1 9YJ
44	Broadfield Lane	NW1 9YJ
45	Broadfield Lane	NW1 9YJ
50	Broadfield Lane	NW1 9YJ
51	Broadfield Lane	NW1 9YJ
52	Broadfield Lane	NW1 9YJ
54	Broadfield Lane	NW1 9YJ

53	Broadfield Lane	NW1 9YJ
20	Elm Friars Walk	NW1 9YP
22	Elm Friars Walk	NW1 9YP
23	Elm Friars Walk	NW1 9YP
34	Elm Friars Walk	NW1 9YP
29	Elm Friars Walk	NW1 9YP
53	Elm Friars Walk	NW1 9YP
25	Elm Friars Walk	NW1 9YP
26	Elm Friars Walk	NW1 9YP
52	Elm Friars Walk	NW1 9YP
33	Elm Friars Walk	NW1 9YP
51	Elm Friars Walk	NW1 9YP
48	Elm Friars Walk	NW1 9YP
30	Elm Friars Walk	NW1 9YP
31	Elm Friars Walk	NW1 9YP
32	Elm Friars Walk	NW1 9YP
39	Elm Friars Walk	NW1 9YP
40	Elm Friars Walk	NW1 9YP
49	Elm Friars Walk	NW1 9YP
27	Elm Friars Walk	NW1 9YP
28	Elm Friars Walk	NW1 9YP
50	Elm Friars Walk	NW1 9YP
9	Elm Friars Walk	NW1 9YP
10	Elm Friars Walk	NW1 9YP
44	Elm Friars Walk	NW1 9YP
46	Elm Friars Walk	NW1 9YP
7	Elm Friars Walk	NW1 9YP
8	Elm Friars Walk	NW1 9YP
45	Elm Friars Walk	NW1 9YP
3	Elm Friars Walk	NW1 9YP
4	Elm Friars Walk	NW1 9YP
5	Elm Friars Walk	NW1 9YP
6	Elm Friars Walk	NW1 9YP
37	Elm Friars Walk	NW1 9YP
38	Elm Friars Walk	NW1 9YP
1	Elm Friars Walk	NW1 9YP
2	Elm Friars Walk	NW1 9YP
47	Elm Friars Walk	NW1 9YP
13	Elm Friars Walk	NW1 9YP
14	Elm Friars Walk	NW1 9YP
42	Elm Friars Walk	NW1 9YP
11	Elm Friars Walk	NW1 9YP
43	Elm Friars Walk	NW1 9YP
12	Elm Friars Walk	NW1 9YP

35	Elm Friars Walk	NW1 9YP
36	Elm Friars Walk	NW1 9YP
54	Elm Friars Walk	NW1 9YP
15	Elm Friars Walk	NW1 9YP
16	Elm Friars Walk	NW1 9YP
19	Elm Friars Walk	NW1 9YP
17	Elm Friars Walk	NW1 9YP
18	Elm Friars Walk	NW1 9YP
55	Elm Friars Walk	NW1 9YP
41	Elm Friars Walk	NW1 9YP
24	Elm Friars Walk	NW1 9YP
21	Elm Friars Walk	NW1 9YP
19	Linkwood Walk	NW1 9YB
4	Linkwood Walk	NW1 9YB
9	Linkwood Walk	NW1 9YB
10	Linkwood Walk	NW1 9YB
11	Linkwood Walk	NW1 9YB
12	Linkwood Walk	NW1 9YB
13	Linkwood Walk	NW1 9YB
16	Linkwood Walk	NW1 9YB
17	Linkwood Walk	NW1 9YB
15	Linkwood Walk	NW1 9YB
18	Linkwood Walk	NW1 9YB
14	Linkwood Walk	NW1 9YB
8	Linkwood Walk	NW1 9YB
7	Linkwood Walk	NW1 9YB
3	Linkwood Walk	NW1 9YB
5	Linkwood Walk	NW1 9YB
6	Linkwood Walk	NW1 9YB
2	Linkwood Walk	NW1 9YB
1	Linkwood Walk	NW1 9YB
84	Maiden Lane	NW1 9UQ
61	Maiden Lane	NW1 9YN
173	Maiden Lane	NW1 9YW
188	Maiden Lane	NW1 9UQ
69	Maiden Lane	NW1 9YN
115	Maiden Lane	NW1 9YN
157	Maiden Lane	NW1 9YW
114	Maiden Lane	NW1 9UQ
140	Maiden Lane	NW1 9UQ
196	Maiden Lane	NW1 9UQ
179	Maiden Lane	NW1 9YW
181	Maiden Lane	NW1 9YW
184	Maiden Lane	NW1 9UQ

186	Maiden Lane	NW1 9UQ
103	Maiden Lane	NW1 9YN
101	Maiden Lane	NW1 9YN
153	Maiden Lane	NW1 9YW
99	Maiden Lane	NW1 9YN
97	Maiden Lane	NW1 9YN
113	Maiden Lane	NW1 9YN
147	Maiden Lane	NW1 9YW
145	Maiden Lane	NW1 9YW
172	Maiden Lane	NW1 9UQ
190	Maiden Lane	NW1 9UQ
174	Maiden Lane	NW1 9UQ
159	Maiden Lane	NW1 9YW
131	Maiden Lane	NW1 9YW
129	Maiden Lane	NW1 9YW
161	Maiden Lane	NW1 9YW
81	Maiden Lane	NW1 9YN
83	Maiden Lane	NW1 9YN
95	Maiden Lane	NW1 9YN
93	Maiden Lane	NW1 9YN
143	Maiden Lane	NW1 9YW
141	Maiden Lane	NW1 9YW
200	Maiden Lane	NW1 9UQ
202	Maiden Lane	NW1 9UQ
88	Maiden Lane	NW1 9UQ
155	Maiden Lane	NW1 9YW
65	Maiden Lane	NW1 9YN
67	Maiden Lane	NW1 9YN
168	Maiden Lane	NW1 9UQ
170	Maiden Lane	NW1 9UQ
104	Maiden Lane	NW1 9UQ
106	Maiden Lane	NW1 9UQ
116	Maiden Lane	NW1 9UQ
118	Maiden Lane	NW1 9UQ
120	Maiden Lane	NW1 9UQ
122	Maiden Lane	NW1 9UQ
108	Maiden Lane	NW1 9UQ
110	Maiden Lane	NW1 9UQ
112	Maiden Lane	NW1 9UQ
166	Maiden Lane	NW1 9UQ
132	Maiden Lane	NW1 9UQ
134	Maiden Lane	NW1 9UQ
136	Maiden Lane	NW1 9UQ
138	Maiden Lane	NW1 9UQ

124	Maiden Lane	NW1 9UQ
126	Maiden Lane	NW1 9UQ
128	Maiden Lane	NW1 9UQ
130	Maiden Lane	NW1 9UQ
148	Maiden Lane	NW1 9UQ
150	Maiden Lane	NW1 9UQ
152	Maiden Lane	NW1 9UQ
154	Maiden Lane	NW1 9UQ
142	Maiden Lane	NW1 9UQ
144	Maiden Lane	NW1 9UQ
146	Maiden Lane	NW1 9UQ
164	Maiden Lane	NW1 9UQ
156	Maiden Lane	NW1 9UQ
158	Maiden Lane	NW1 9UQ
160	Maiden Lane	NW1 9UQ
162	Maiden Lane	NW1 9UQ
86	Maiden Lane	NW1 9UQ
71	Maiden Lane	NW1 9YN
180	Maiden Lane	NW1 9UQ
182	Maiden Lane	NW1 9UQ
82	Maiden Lane	NW1 9UQ
111	Maiden Lane	NW1 9YN
165	Maiden Lane	NW1 9YW
109	Maiden Lane	NW1 9YN
80	Maiden Lane	NW1 9UQ
127	Maiden Lane	NW1 9YW
125	Maiden Lane	NW1 9YW
171	Maiden Lane	NW1 9YW
85	Maiden Lane	NW1 9YN
87	Maiden Lane	NW1 9YN
100	Maiden Lane	NW1 9UQ
73	Maiden Lane	NW1 9YN
75	Maiden Lane	NW1 9YN
167	Maiden Lane	NW1 9YW
163	Maiden Lane	NW1 9YW
98	Maiden Lane	NW1 9UQ
139	Maiden Lane	NW1 9YW
137	Maiden Lane	NW1 9YW
198	Maiden Lane	NW1 9UQ
57	Maiden Lane	NW1 9YN
59	Maiden Lane	NW1 9YN
123	Maiden Lane	NW1 9YW
121	Maiden Lane	NW1 9YW
169	Maiden Lane	NW1 9YW

107	Maiden Lane	NW1 9YN
105	Maiden Lane	NW1 9YN
175	Maiden Lane	NW1 9YW
96	Maiden Lane	NW1 9UQ
92	Maiden Lane	NW1 9UQ
89	Maiden Lane	NW1 9YN
91	Maiden Lane	NW1 9YN
94	Maiden Lane	NW1 9UQ
149	Maiden Lane	NW1 9YW
151	Maiden Lane	NW1 9YW
77	Maiden Lane	NW1 9YN
79	Maiden Lane	NW1 9YN
63	Maiden Lane	NW1 9YN
192	Maiden Lane	NW1 9UQ
176	Maiden Lane	NW1 9UQ
194	Maiden Lane	NW1 9UQ
178	Maiden Lane	NW1 9UQ
102	Maiden Lane	NW1 9UQ
177	Maiden Lane	NW1 9YW
90	Maiden Lane	NW1 9UQ
135	Maiden Lane	NW1 9YW
133	Maiden Lane	NW1 9YW
117	Maiden Lane	NW1 9YN
119	Maiden Lane	NW1 9YN
1	Rosebank Walk	NW1 9YA
2	Rosebank Walk	NW1 9YA
3	Rosebank Walk	NW1 9YA
8	Rosebank Walk	NW1 9YA
6	Rosebank Walk	NW1 9YA
4	Rosebank Walk	NW1 9YA
5	Rosebank Walk	NW1 9YA
7	Rosebank Walk	NW1 9YA
10	Rosebank Walk	NW1 9YA
11	Rosebank Walk	NW1 9YA
9	Rosebank Walk	NW1 9YA
12	Rosebank Walk	NW1 9YA
13	Rosebank Walk	NW1 9YA
19	Rosebank Walk	NW1 9YA
18	Rosebank Walk	NW1 9YA
16	Rosebank Walk	NW1 9YA
14	Rosebank Walk	NW1 9YA
17	Rosebank Walk	NW1 9YA
15	Rosebank Walk	NW1 9YA
16	Springbank Walk	NW1 9XX

13	Springbank Walk	NW1 9XX
18	Springbank Walk	NW1 9XX
17	Springbank Walk	NW1 9XX
14	Springbank Walk	NW1 9XX
15	Springbank Walk	NW1 9XX
19	Springbank Walk	NW1 9XX
6	Springbank Walk	NW1 9XX
3	Springbank Walk	NW1 9XX
2	Springbank Walk	NW1 9XX
5	Springbank Walk	NW1 9XX
4	Springbank Walk	NW1 9XX
20	Springbank Walk	NW1 9XX
1	Springbank Walk	NW1 9XX
7	Springbank Walk	NW1 9XX
12	Springbank Walk	NW1 9XX
11	Springbank Walk	NW1 9XX
8	Springbank Walk	NW1 9XX
10	Springbank Walk	NW1 9XX
9	Springbank Walk	NW1 9XX
180	St Paul's Crescent	NW1 9XZ
84	St Paul's Crescent	NW1 9XZ
100	St Paul's Crescent	NW1 9XZ
130	St Paul's Crescent	NW1 9XZ
78	St Paul's Crescent	NW1 9XZ
182	St Paul's Crescent	NW1 9XZ
184	St Paul's Crescent	NW1 9XZ
166	St Paul's Crescent	NW1 9XZ
168	St Paul's Crescent	NW1 9XZ
178	St Paul's Crescent	NW1 9XZ
174	St Paul's Crescent	NW1 9XZ
176	St Paul's Crescent	NW1 9XZ
94	St Paul's Crescent	NW1 9XZ
102	St Paul's Crescent	NW1 9XZ
110	St Paul's Crescent	NW1 9XZ
64	St Paul's Crescent	NW1 9XZ
66	St Paul's Crescent	NW1 9XZ
68	St Paul's Crescent	NW1 9XZ
72	St Paul's Crescent	NW1 9XZ
56	St Paul's Crescent	NW1 9XZ
58	St Paul's Crescent	NW1 9XZ
60	St Paul's Crescent	NW1 9XZ
86	St Paul's Crescent	NW1 9XZ
88	St Paul's Crescent	NW1 9XZ
90	St Paul's Crescent	NW1 9XZ

74	St Paul's Crescent	NW1 9XZ
76	St Paul's Crescent	NW1 9XZ
80	St Paul's Crescent	NW1 9XZ
82	St Paul's Crescent	NW1 9XZ
104	St Paul's Crescent	NW1 9XZ
106	St Paul's Crescent	NW1 9XZ
108	St Paul's Crescent	NW1 9XZ
92	St Paul's Crescent	NW1 9XZ
96	St Paul's Crescent	NW1 9XZ
98	St Paul's Crescent	NW1 9XZ
120	St Paul's Crescent	NW1 9XZ
122	St Paul's Crescent	NW1 9XZ
124	St Paul's Crescent	NW1 9XZ
126	St Paul's Crescent	NW1 9XZ
114	St Paul's Crescent	NW1 9XZ
116	St Paul's Crescent	NW1 9XZ
118	St Paul's Crescent	NW1 9XZ
136	St Paul's Crescent	NW1 9XZ
138	St Paul's Crescent	NW1 9XZ
140	St Paul's Crescent	NW1 9XZ
142	St Paul's Crescent	NW1 9XZ
128	St Paul's Crescent	NW1 9XZ
132	St Paul's Crescent	NW1 9XZ
134	St Paul's Crescent	NW1 9XZ
150	St Paul's Crescent	NW1 9XZ
152	St Paul's Crescent	NW1 9XZ
154	St Paul's Crescent	NW1 9XZ
112	St Paul's Crescent	NW1 9XZ
144	St Paul's Crescent	NW1 9XZ
146	St Paul's Crescent	NW1 9XZ
148	St Paul's Crescent	NW1 9XZ
162	St Paul's Crescent	NW1 9XZ
164	St Paul's Crescent	NW1 9XZ
70	St Paul's Crescent	NW1 9XZ
62	St Paul's Crescent	NW1 9XZ
158	St Paul's Crescent	NW1 9XZ
160	St Paul's Crescent	NW1 9XZ
170	St Paul's Crescent	NW1 9XZ
172	St Paul's Crescent	NW1 9XZ
186	St Paul's Crescent	NW1 9XZ
188	St Paul's Crescent	NW1 9XZ

SCHEDULE 3 – PARKING AND PERMIT CHARGES

1. The parking charge payable for a Residents' Permit as referred to in **Article 24.3** shall be either:-

- (a) in respect of an application for a Residents' Permit in relation to the Maiden Lane Estate, **thirty pounds (£30.00)** per annum;
- (b) in respect of an application for a Residents' Permit in relation to any other housing estate not being the Maiden Lane Estate, calculated according to the tenancy type of the applicant, and either the vehicle's carbon dioxide emissions per kilometre travelled, or its engine size if it was first registered on or before 1 March 2001, and shall be equivalent to the tariffs set out in relation to those criteria in the following table:

TENANCY TYPE	TARIFF	VEHICLE BANDS	CARBON DIOXIDE EMISSIONS (G/KM)	ENGINE SIZE (CC)	PARKING CHARGE (PER WEEK)
Council tenant or leaseholder	tariff 1	A, B, C, D, E, F	up to 150	between 0 and 1,299	£2.78
	tariff 2	G, H, I	between 161 and 185	between 1,300 and 1,849	£3.40
	tariff 3	J, K	between 186 and 225	between 1,850 and 2,449	£4.28
	tariff 4	L, M	more than 225	2,450 and over	£5.92
Private tenant	tariff 1	A, B, C, D, E, F	up to 150	between 0 and 1,299	£16.17 plus VAT, where applicable (see Note)
	tariff 2	G, H, I	between 161 and 185	between 1,300 and 1,849	£19.84 plus VAT, where applicable
	tariff 3	J, K	between 186 and 225	between 1,850 and 2,449	£25.00 plus VAT, where applicable
	tariff 4	L, M	more than 225	2,450 and over	£34.49 plus VAT, where applicable
NOTE: 20% VAT is applicable to permit purchases by Private tenants, in respect of permits valid for use in off-street parking places.					

2. The parking charge payable for a Disabled Residents' Permit as referred to in **Article 24.3** shall be **zero (£0.00)** per annum.

3. The parking charge payable in respect of a Visitors' Permit as referred to in **Article 26.3** shall be either:-

- (a) **fifty pence (£0.50)** in respect of a Visitors' Permit valid for a period of three hours; or
 - (b) **five pounds (£5.00)** in respect of a Visitors' Permit valid for a period of one day; or
 - (c) **ten pounds (£10.00)** in respect of a Visitors' Permit valid for a period of one week.
4. The charge for a Parking Permission as referred to in **Articles 15.3, 34.3** and **44.3** shall be **sixty pounds (£60.00)** plus VAT, where applicable, per week.

EXPLANATORY NOTE

(This Note is not part of the Order)

The effect of this Order is to provide formal parking controls in both on-street and off-street areas of the Maiden Lane Housing Estate, in the London Borough of Camden.